

LOVEX[®]
Energy for your Ammunition



Reloading Guide 2011

LOVEX powders for pistols and revolvers

CALIBRES	S011	S020	D032	D036	D037.1	D037.2
7.6 x 25 TOKAREV						
.380 AUTO						
9 mm LUGER						
.38 SPECIAL						
.357 MAGNUM						
.357 SIG						
.40 S&W						
.44 REMINGTON MAG.						
.45 ACP						

LOVEX powders for rifles

CALIBRES	S040	D060	S053	D063	S060	D073.4	D073.5	S062	D073.6	S065	S070	D100
.22 HORNET												
.222 REMINGTON												
.223 REMINGTON												
6 mm BR REMINGTON												
.243 WINCHESTER												
6.5 x 55 mm SWEDISH												
.270 WINCHESTER												
7 x 57 mm MAUSER												
7 mm 08 REMINGTON												
7 mm REMINGTON MAG.												
.30 M1 CARBINE												
.30-30 WINCHESTER												
.308 WINCHESTER												
7.62 x 39 mm RUSSIAN												
7.62 x 54 mm RUSSIAN												
.30-06 SPRINGFIELD												
.300 WINCHESTER MAG.												
.303 BRITISH												
8 x 57 mm IS (0.323")												
9.3 x 74												
.45-70 GOVERNMENT												
.50 BROWNING												

 usable

 unusable

INTRODUCTION

The LOVEX® Reloading Guide for centre fire ammunition was created as manual for reloading of LOVEX® smokeless propellants manufactured by EXPLOZIA® Company. These reloading propellants were specially selected from many different propellants, which we produce, to be able to cover usage in all commonly used calibres.

POWDER INFORMATION

Explosia® Company produces two basic types of reloading powders – single base powders and double base powders with certain percentage of nitroglycerin. The powders depending on technology are manufactured in the form of tubular or ball particles. LOVEX® reloading powders guide includes a lot of different propellants for all commonly used calibres.

SINGLE BASE POWDERS

Nitrocellulose is the main component (90–98 %) of single base powders. Various additives such as stabilizers, surface treatment agents, flame reducing agents and ingredients affecting the burning characteristics are used as well. The shape of the powder grain is tubular. Most single base propellants produced in Explosia® Company are surface coated to achieve the progressiveness of burning.

Handgun single base powders: **S011 and S020**

Rifle single base powders: **S040, S053, S060, S062, S065 and S070**

DOUBLE BASE POWDERS

In addition to nitrocellulose double base powders contain also nitroglycerin (8–22 %) as an energetic component. These powders contain also a small percentage of stabilizers or other additives as the single base powders. Double base powders are of higher energetic value than single base powders and their ballistic performance is better. The shape of powder grain is tubular or ball.

Handgun double base powders: **D032, D036, D037.1 and D037.2**

Rifle double base powders: **D060, D063, D073.4, D073.5, D073.6 and D100**

The powders LOVEX® are manufactured in Explosia® Company in Pardubice-Semtín plant (Czech Republic). Contact details of our customer service and the list of LOVEX® distributors can be found at www.explosia.cz, where this guide can also be downloaded.

Reloading data on-line: www.explosia.cz

Internal ballistic computation of different weapon / ammunition / powder combination can be performed with software **QUICKLOAD** (author Hartmut Broemel, Babenhausen, Germany).



POWDER DESCRIPTION

HANDGUN POWDERS

S011

A fast burning, low density, single base, tubular propellant most suitable for .38 Special and .45 Auto cartridges. Also applicable for 7.65 Pi, 9 mm Makarov or 9 mm Browning court cartridges. Our fastest handgun propellant.

D032

A fast burning, low density, double base, ball propellant similar to Accurate No. 2. It is excellent in almost all handgun cartridges, especially where clean burning is desirable.

S020

A fast burning, low density, single base, tubular propellant especially for use in the 9 mm Luger. Also suitable for many other pistol and revolver cartridges.

D036

A relatively fast burning, high density, double base, ball propellant similar to Accurate No. 5 designed for .45 ACP. In comparison with other our powders it is usable in most handgun cartridges.

D037.1

High density, double base, ball propellant similar to Accurate No. 7 designed for 9 mm NATO carbine ammunition. Somewhat more specialized in applications than D032 and D036, it is well suited to high intensity cartridges. It is a good choice for .357, .41 and .44 Magnum cartridges, when slightly less than full powder loads are preferred.

D037.2

High density, double base, ball propellant similar to Accurate No. 9 is most suitable for .44 Magnum. This propellant gives excellent velocities for the pressures generated and with less flash than other comparable powders. It is intended for use in large capacity handgun cartridges (.357, .41, .44 Magnum and .454 Casull). It is also suitable for some small rifle cartridges (.25-20 Winchester, .30 M1 Carbine) and the .410 shotgun. It is the best with heavier bullets in most calibres. Our slowest handgun propellant.

RIFLE POWDERS

S040

High density, single base, tubular propellant suitable for .22 Hornet and .30 Carbine cartridges and for other small shotguns. Also usable in high capacity handgun cartridges.

D060

High density, double base, tubular propellant similar to Accurate 5744 designed primarily for .45-70 Government, .45-120 and .50-90 Sharps cartridges and for reduced loads in all calibre rifles.

S053

High density, single base, tubular propellant most suitable for 7.62 x 39 and .22 Hornet cartridges. Also suitable for small capacity cartridges such as the T/CU series, the .222 Remington and the .223 Remington with lighter bullets.

D063

High density, double base, ball propellant similar to Accurate 1680 suitable for 7.62 x 39 cartridge. Also suitable for small capacity cartridges such as the T/CU series, the .222 Remington and the .223 Remington with lighter bullets.

S060

High density, single base, tubular propellant similar to Accurate 2015. It is extremely flexible, giving excellent performance in many cartridges from .222 Remington to .458 Winchester Mag.

D073.4

High density, double base, ball propellant similar to Accurate 2230, which is one of four most popular rifle powders. Designed for .223 Remington (5.56 NATO).

D073.5

Medium burning, high density, double base, ball propellant similar to Accurate 2460 is useful in wide variety of cartridges. It is slightly slower than D073.4 and shows a small pressure advantage over D073.4 in bores 7 mm and over. Excellent in .308 Winchester, also suitable for M1 and M14 (M1A) service rifles.

D073.6

Medium-slow burning, high density, double base, ball propellant similar to Accurate 2520 gives excellent results in medium capacity cartridges (.308 class) and in certain applications in large bore cartridges. It is the best choice for target shooters using 168 grain bullets in the .308 Winchester. D073.6 has a pressure curve appropriate for use with M1 and M14 (M1A) service rifles.

S062

High density, single base, tubular propellant similar to Accurate 4064 most suitable for 8 x 57 IS, .30-06 and other ball cartridges.

S065

High density, single base, tubular propellant most suitable for 7 x 57 cartridge and for other shotguns like 7 x 57 R, 7 x 65 R and from 7 x 64 to 8 x 57 IS.

S070

High density, single base, tubular propellant similar to Accurate 4350 giving excellent performance from .243 Winchester and .270 Winchester cartridges to the largest Magnum cartridges.

D100

Medium-slow burning, high density, double base, ball propellant most suitable for .50 Browning cartridge.

SAFETY AND HEALTH PRECAUTIONS

- ✘ DO NOT SMOKE, WHERE POWDER IS STORED AND WHEN RELOADING.
 - ✘ KEEP POWDER AWAY FROM ELECTRICAL MACHINERY, THAT COULD PRODUCE SPARKS AND KEEP IT AWAY FROM OTHER COMBUSTIBLE MATERIALS OR FLAMMABLE LIQUIDS.
 - ✘ STORE IN A COOL, DARK AND DRY PLACE. STORAGE CABINETS SHOULD BE SELF VENTING, ALLOWING COMBUSTIBLE GASES TO ESCAPE AND (IF POSSIBLE) SHOULD BE CONSTRUCTED OF INSULATING MATERIALS TO PROTECT POWDERS FROM HEAT.
 - ✘ KEEP POWDER OUT OF REACH OF CHILDREN.
 - ✘ DO NOT MIX POWDERS OF DIFFERENT KINDS.
 - ✘ POUR OUT ONLY THE AMOUNT OF POWDER NEEDED FOR IMMEDIATE WORK.
 - ✘ CHECK THE POWDER MEASURE EACH TIME IT IS USED. MAKE SURE THE SETTINGS HAVE NOT BEEN ACCIDENTALLY CHANGED. CHECK-WEIGHT “THROWN CHARGES” FREQUENTLY.
 - ✘ CLEAN UP SPILLED POWDER. USE A BRUSH AND DUSTPAN. DO NOT USE A VACUUM CLEANER.
 - ✘ DO NOT REPACKAGE. STORE POWDER ONLY IN ITS ORIGINAL CONTAINERS. DO NOT USE THE CONTAINERS TO STORE OTHER POWDERS AND MATERIALS OR FOR OTHER PURPOSE.
 - ✘ DO NOT KEEP OLD OR SALVAGED POWDERS. CHECK OLD POWDERS FOR DETERIORATION REGULARLY.
 - ✘ OBEY ALL REGULATIONS AND LEGISLATION REGARDING QUANTITY AND METHODS OF STORING VALID IN YOUR COUNTRY. DO NOT STORE ALL YOUR POWDERS IN ONE PLACE. IF YOU CAN, MAINTAIN SEPARATE STORAGE LOCATIONS. MANY SMALL CONTAINERS ARE SAFER THAN ONE OR MORE LARGE CONTAINERS.
-
- ➔ Do not take internally. In case of ingestion cause vomiting by putting finger down throat. Call physician.
 - ➔ Prevent contact with food, chewing and smoking material.
 - ➔ Have adequate ventilation during handling.
 - ➔ Do not carry powder in clothing.

!!! WARNING !!!

READ BEFORE USING

The task of reloading centre fire metallic cartridges should only be undertaken by someone familiar with reloading procedures. One must observe all possible safety precautions and practices in accordance with proper handling of any explosive. We suggest you read up on reloading procedures. There are a number of excellent books on the subject.

After powder leaves our plant, we have no control over improper storage, handling, loading or using or on the condition of firearms or component use. For these reasons we make **no warranty** of merchantability or fitness for a particular use. All our loading data is intended solely for use in modern weapons.

Working up charges: For all pistol and rifle powders load and fire a few cartridges at 10% less (starting) charge, than is shown, watching for any sign of excessive pressure (difficult extraction, flattened or blown primers, unusual recoil).

**ALWAYS START AT THE SUGGESTED MINIMUM STARTING
CHARGE AND NEVER EXCEED THE LOADS LISTED IN THIS
PUBLICATION**

6.35 Browning / .25 Auto

Barrel Length: 150 mm		Case: Sellier & Bellot				Max. Cartridge Length: 23.11 mm					
Twist: 10.00"		Primer: 4.4 SP Boxer S&B				Max. Pressure CIP: 1 200 Bar					
Bullet	Recommended Loads				Maximum Loads				Sellier & Bellot		
	Powder Charge		Velocity V5		Powder Charge		Velocity V5			Pressure	
FMJ 3.30 g 50 grs	Grams	Grains	m/s	FPS	Grams	Grains	m/s	FPS	Bar	PSI	Cartridge Length
	S011	0.060	0.93	220	722	0.080	1.23	280	918	1175	
D032	0.080	1.23	215	705	0.090	1.39	280	918	1185	17200	
S020	0.080	1.23	230	754	0.100	1.54	285	935	1160	16800	
D036	0.100	1.54	215	705	0.130	2.01	285	935	1170	17000	

7.62 x 25 Tokarev

Barrel Length: 150 mm		Case: Sellier & Bellot				Max. Cartridge Length: 35.20 mm					
Twist: 9.44"		Primer: 4.4 SP Boxer S&B				Max. Pressure CIP: 2 400 Bar					
Bullet	Recommended Loads				Maximum Loads				Sellier & Bellot		
	Powder Charge		Velocity V5		Powder Charge		Velocity V5			Pressure	
FMJ 5.50 g 85 grs	Grams	Grains	m/s	FPS	Grams	Grains	m/s	FPS	Bar	PSI	Cartridge Length
	S011	0.340	5.2	415	1361	0.375	5.8	450	1476	2350	
D032	0.350	5.4	420	1378	0.410	6.3	450	1476	2370	34400	
S020	0.390	6.0	430	1410	0.425	6.6	460	1509	2360	34300	
D036	0.490	7.6	430	1410	0.560	8.6	480	1574	2340	34000	
D037.1	0.600	9.3	430	1410	0.690	10.6	500	1640	2390	34700	
D037.2	0.680	10.5	440	1443	0.750	11.6	500	1640	2390	34700	

7.65 Browning / .32 Auto

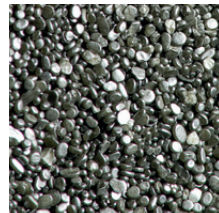
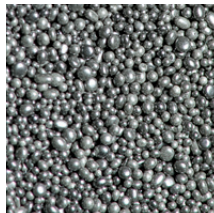
Barrel Length: 97 mm		Case: Sellier & Bellot				Max. Cartridge Length: 25.00 mm					
Twist: 9.44"		Primer: 4.4 SP Boxer S&B				Max. Pressure CIP: 1 600 Bar					
Bullet	Recommended Loads				Maximum Loads				Sellier & Bellot		
	Powder Charge		Velocity V5		Powder Charge		Velocity V5			Pressure	
FMJ 4.75 g 73 grs	Grams	Grains	m/s	FPS	Grams	Grains	m/s	FPS	Bar	PSI	Cartridge Length
	S011	0.150	2.3	260	853	0.170	2.6	310	1017	1580	
D032	0.160	2.5	260	853	0.195	3.0	310	1017	1580	22900	
S020	0.180	2.8	270	886	0.200	3.1	315	1033	1560	22600	
D036	0.230	3.5	270	886	0.285	4.4	320	1050	1590	23100	

HANDGUN DATA

HANDGUN

.32 Smith & Wesson Long											
Barrel Length: 150 mm				Case: Sellier & Bellot				Max. Cartridge Length: 32.51 mm			
Twist: 15.98"				Primer: 4.4 SP Boxer S&B				Max. Pressure CIP: 1 000 Bar			
Bullet	Recommended Loads				Maximum Loads						Sellier & Bellot
	Powder Charge		Velocity V5		Powder Charge		Velocity V5		Pressure		
WC 6.50 g 100 grs	Grams	Grains	m/s	FPS	Grams	Grains	m/s	FPS	Bar	PSI	Cartridge Length
S011	0.100	1.5	210	689	0.150	2.3	260	853	820	11900	24.30 mm
D032	0.110	1.7	200	656	0.130	2.0	230	754	850	12300	
S020	0.110	1.7	200	656	0.160	2.5	230	754	860	12500	
D036	0.100	1.5	210	689	0.150	2.3	260	853	780	11300	
Bullet	Recommended Loads				Maximum Loads						Sellier & Bellot
	Powder Charge		Velocity V5		Powder Charge		Velocity V5		Pressure		
LRN 6.50 g 100 grs	Grams	Grains	m/s	FPS	Grams	Grains	m/s	FPS	Bar	PSI	Cartridge Length
S011	0.150	2.3	250	820	0.180	2.8	280	918	930	13500	32.50 mm
D032	0.190	2.9	240	787	0.220	3.4	280	918	960	13900	
S020	0.180	2.8	250	820	0.200	3.1	270	886	980	14200	
D036	0.200	3.1	200	656	0.250	3.9	250	820	950	13800	

9 mm Browning Court / .380 ACP											
Barrel Length: 150 mm				Case: Sellier & Bellot				Max. Cartridge Length: 25.00 mm			
Twist: 9.85"				Primer: 4.4 SP Boxer S&B				Max. Pressure CIP: 1 350 Bar			
Bullet	Recommended Loads				Maximum Loads						Sellier & Bellot
	Powder Charge		Velocity V5		Powder Charge		Velocity V5		Pressure		
FMJ 6.00 g 92 grs	Grams	Grains	m/s	FPS	Grams	Grains	m/s	FPS	Bar	PSI	Cartridge Length
S011	0.180	2.8	280	918	0.200	3.1	315	1033	1280	18600	24.90 mm
D032	0.210	3.2	280	918	0.250	3.9	320	1050	1260	18300	
S020	0.200	3.1	270	886	0.240	3.7	320	1050	1240	18000	
D036	0.270	4.2	260	853	0.330	5.1	320	1050	1220	17700	

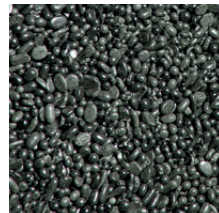
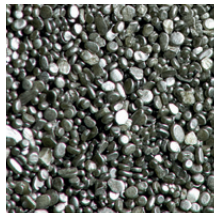
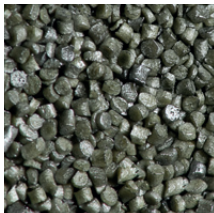


9 mm Luger / 9 mm Parabellum / 9 x 19											
Barrel Length: 150 mm				Case: Sellier & Bellot				Max. Cartridge Length: 29.70 mm			
Twist: 9.85"				Primer: 4.4 SP Boxer S&B				Max. Pressure CIP: 2 350 Bar			
Bullet	Recommended Loads				Maximum Loads						Sellier & Bellot
FMJ 7.50 g 115 grs	Powder Charge		Velocity V5		Powder Charge		Velocity V5		Pressure		Cartridge Length
	Grams	Grains	m/s	FPS	Grams	Grains	m/s	FPS	Bar	PSI	
S011	0.290	4.5	330	1082	0.310	4.8	360	1181	2350	34100	29.69 mm
D032	0.280	4.3	330	1082	0.300	4.6	350	1148	2340	34000	
S020	0.330	5.1	350	1148	0.355	5.5	375	1230	2350	34100	
D036	0.380	5.9	350	1148	0.450	6.9	390	1279	2250	32700	
D037.1	0.500	7.7	350	1148	0.550	8.5	395	1296	2350	34100	
Bullet	Recommended Loads				Maximum Loads						Sellier & Bellot
FMJ 8.00 g 120 grs	Powder Charge		Velocity V5		Powder Charge		Velocity V5		Pressure		Cartridge Length
	Grams	Grains	m/s	FPS	Grams	Grains	m/s	FPS	Bar	PSI	
S011	0.280	4.3	320	1050	0.300	4.6	350	1148	2230	32400	29.69 mm
D032	0.280	4.3	320	1050	0.295	4.6	350	1148	2250	32700	
S020	0.320	4.9	340	1115	0.345	5.3	365	1197	2240	32500	
D036	0.370	5.7	340	1115	0.420	6.5	370	1214	2200	31900	
D037.1	0.470	7.3	340	1115	0.510	7.9	375	1230	2300	33400	
Bullet	Recommended Loads				Maximum Loads						Sellier & Bellot
JHP 7.50 g 115 grs	Powder Charge		Velocity V5		Powder Charge		Velocity V5		Pressure		Cartridge Length
	Grams	Grains	m/s	FPS	Grams	Grains	m/s	FPS	Bar	PSI	
S011	0.230	3.5	320	1050	0.250	3.9	350	1148	2200	31900	26.90 mm
D032	0.230	3.5	320	1050	0.250	3.9	350	1148	2300	33400	
S020	0.280	4.3	340	1115	0.300	4.6	370	1214	2310	33500	
D036	0.330	5.1	340	1115	0.360	5.6	370	1214	2290	33200	
D037.1	0.400	6.2	320	1050	0.440	6.8	360	1181	2340	34000	
Bullet	Recommended Loads				Maximum Loads						Sellier & Bellot
SP 6.50 g 100 grs	Powder Charge		Velocity V5		Powder Charge		Velocity V5		Pressure		Cartridge Length
	Grams	Grains	m/s	FPS	Grams	Grains	m/s	FPS	Bar	PSI	
S011	0.280	4.3	370	1214	0.310	4.8	400	1312	2340	34000	27.50 mm
D032	0.280	4.3	350	1148	0.320	4.9	400	1312	2320	33700	
S020	0.320	4.9	370	1214	0.360	5.6	415	1361	2290	33200	
D036	0.390	6.0	360	1181	0.450	6.9	420	1378	2280	33100	
D037.1	0.470	7.3	360	1181	0.540	8.3	400	1312	2260	32800	

HANDGUN DATA

HANDGUN

9 mm Luger / 9 mm Parabelum / 9 x 19 (continued)											
Bullet	Recommended Loads				Maximum Loads						Seller & Bellot
	Powder Charge		Velocity V5		Powder Charge		Velocity V5		Pressure		
SP 8.00 g 120 grs	Grams	Grains	m/s	FPS	Grams	Grains	m/s	FPS	Bar	PSI	Cartridge Length
S011	0.260	4.0	340	1115	0.285	4.4	360	1181	2320	33700	28.40 mm
D032	0.260	4.0	330	1082	0.285	4.4	355	1164	2300	33400	
S020	0.290	4.5	340	1115	0.330	5.1	370	1214	2310	33500	
D036	0.370	5.7	340	1115	0.410	6.3	380	1246	2320	33700	
D037.1	0.450	6.9	340	1115	0.500	7.7	380	1246	2290	33200	
Bullet	Recommended Loads				Maximum Loads						Seller & Bellot
LRN 8.00 g 120 grs	Powder Charge		Velocity V5		Powder Charge		Velocity V5		Pressure		
	Grams	Grains	m/s	FPS	Grams	Grains	m/s	FPS	Bar	PSI	Cartridge Length
S011	0.250	3.9	330	1082	0.275	4.2	350	1148	2280	33100	28.00 mm
D032	0.260	4.0	330	1082	0.285	4.4	350	1148	2290	33200	
S020	0.280	4.3	330	1082	0.320	4.9	360	1181	2300	33400	
D036	0.370	5.7	340	1115	0.410	6.3	380	1246	2310	33500	
D037.1	0.450	6.9	340	1115	0.500	7.7	380	1246	2280	33100	
Bullet	Recommended Loads				Maximum Loads						Seller & Bellot
FMJ 9.10 g 140 grs	Powder Charge		Velocity V5		Powder Charge		Velocity V5		Pressure		
	Grams	Grains	m/s	FPS	Grams	Grains	m/s	FPS	Bar	PSI	Cartridge Length
S011	0.190	2.9	280	918	0.215	3.3	305	1000	2340	34000	26.50 mm
D032	0.200	3.1	280	918	0.210	3.2	300	984	2310	33500	
S020	0.220	3.4	285	935	0.250	3.9	310	1017	2290	33200	
D036	0.260	4.0	270	886	0.290	4.5	310	1017	2100	30500	
D037.1	0.330	5.1	280	918	0.360	5.6	310	1017	2240	32500	



9 x 21

Barrel Length: 150 mm		Case: Sellier & Bellot				Max. Cartridge Length: 29.70 mm					
Twist: 9.85"		Primer: 4.4 SP Boxer S&B				Max. Pressure CIP: 2 350 Bar					
Bullet	Recommended Loads				Maximum Loads				Sellier & Bellot		
FMJ 7.50 g 115 grs	Powder Charge		Velocity V5		Powder Charge		Velocity V5		Pressure		Cartridge Length
	Grams	Grains	m/s	FPS	Grams	Grains	m/s	FPS	Bar	PSI	
S011	0.290	4.5	330	1082	0.310	4.8	360	1181	2350	34100	29.75 mm
D032	0.280	4.3	330	1082	0.300	4.6	350	1148	2340	34000	
S020	0.330	5.1	350	1148	0.355	5.5	375	1230	2350	34100	
D036	0.380	5.9	350	1148	0.450	6.9	390	1279	2250	32700	
D037.1	0.500	7.7	350	1148	0.550	8.5	395	1296	2350	34100	
Bullet	Recommended Loads				Maximum Loads				Sellier & Bellot		
FMJ 8.00 g 124 grs	Powder Charge		Velocity V5		Powder Charge		Velocity V5		Pressure		Cartridge Length
	Grams	Grains	m/s	FPS	Grams	Grains	m/s	FPS	Bar	PSI	
S011	0.280	4.3	320	1050	0.300	4.6	350	1148	2230	32400	29.75 mm
D032	0.280	4.3	320	1050	0.295	4.6	350	1148	2250	32700	
S020	0.320	4.9	340	1115	0.345	5.3	365	1197	2240	32500	
D036	0.370	5.7	340	1115	0.420	6.5	370	1214	2200	31900	
D037.1	0.470	7.3	340	1115	0.510	7.9	375	1230	2300	33400	
Bullet	Recommended Loads				Maximum Loads				Sellier & Bellot		
LRN 8.00 g 124 grs	Powder Charge		Velocity V5		Powder Charge		Velocity V5		Pressure		Cartridge Length
	Grams	Grains	m/s	FPS	Grams	Grains	m/s	FPS	Bar	PSI	
S011	0.250	3.9	330	1082	0.275	4.2	350	1148	2280	33100	29.75 mm
D032	0.260	4.0	330	1082	0.285	4.4	350	1148	2290	33200	
S020	0.280	4.3	330	1082	0.320	4.9	360	1181	2300	33400	
D036	0.370	5.7	340	1115	0.410	6.3	380	1246	2310	33500	
D037.1	0.450	6.9	340	1115	0.500	7.7	380	1246	2280	33100	

.357 SIG

Barrel Length: 150 mm		Case: Sellier & Bellot				Max. Cartridge Length: 28.96 mm					
Twist: 16.00"		Primer: 4.4 SP Boxer S&B				Max. Pressure CIP: 3 050 Bar					
Bullet	Recommended Loads				Maximum Loads				Sellier & Bellot		
FMJ 9.10 g 140 grs	Powder Charge		Velocity V5		Powder Charge		Velocity V5		Pressure		Cartridge Length
	Grams	Grains	m/s	FPS	Grams	Grains	m/s	FPS	Bar	PSI	
S011	0.330	5.1	350	1148	0.370	5.7	380	1246	2980	43300	28.96 mm
D032	0.360	5.6	360	1181	0.395	6.1	390	1279	3000	43500	
S020	0.370	5.7	370	1214	0.420	6.5	400	1312	3020	43800	
D036	0.470	7.3	370	1214	0.530	8.2	420	1378	2980	43300	
D037.1	0.620	9.6	410	1345	0.670	10.3	435	1427	2960	43000	
D037.2	0.670	10.3	400	1312	0.700	10.8	430	1410	2860	41500	

HANDGUN DATA

9 mm Makarov											
Barrel Length: 150 mm				Case: Sellier & Bellot				Max. Cartridge Length: 25.00 mm			
Twist: 9.45"				Primer: 4.4 SP Boxer S&B				Max. Pressure CIP: 1 600 Bar			
Bullet	Recommended Loads				Maximum Loads						Sellier & Bellot
	Powder Charge		Velocity V5		Powder Charge		Velocity V5		Pressure		
FMJ 6.10 g 95 grs	Grams	Grains	m/s	FPS	Grams	Grains	m/s	FPS	Bar	PSI	Cartridge Length
	S011	0.220	3.4	320	1050	0.245	3.8	355	1164	1580	
D032	0.240	3.7	320	1050	0.275	4.2	350	1148	1590	23100	
S020	0.270	4.2	340	1115	0.300	4.6	370	1214	1540	22400	
D036	0.320	4.9	330	1082	0.380	5.9	360	1181	1460	21200	
D037.1	0.420	6.5	310	1017	0.480	7.4	360	1181	1590	23100	

.38 Special											
Barrel Length: 150 mm				Case: Sellier & Bellot				Max. Cartridge Length: 39.37 mm			
Twist: 18.72"				Primer: 4.4 SP Boxer S&B				Max. Pressure CIP: 1 500 Bar			
Bullet	Recommended Loads				Maximum Loads						Sellier & Bellot
	Powder Charge		Velocity V5		Powder Charge		Velocity V5		Pressure		
FMJ 10.25 g 158 grs	Grams	Grains	m/s	FPS	Grams	Grains	m/s	FPS	Bar	PSI	Cartridge Length
	S011	0.280	4.3	270	886	0.320	4.9	300	984	1470	
D032	0.280	4.3	265	869	0.330	5.1	290	951	1500	21800	
S020	0.330	5.1	280	918	0.380	5.9	320	1050	1500	21800	
D036	0.380	5.9	280	918	0.420	6.5	310	1017	1390	20200	
SP 10.25 g 158 grs	Grams	Grains	m/s	FPS	Grams	Grains	m/s	FPS	Bar	PSI	Cartridge Length
S011	0.280	4.3	270	886	0.320	4.9	300	984	1470	21300	
D032	0.280	4.3	265	869	0.330	5.1	290	951	1500	21800	
S020	0.330	5.1	280	918	0.380	5.9	320	1050	1500	21800	
D036	0.380	5.9	280	918	0.420	6.5	310	1017	1390	20200	
LRN 10.25 g 158 grs	Grams	Grains	m/s	FPS	Grams	Grains	m/s	FPS	Bar	PSI	Cartridge Length
S011	0.280	4.3	260	853	0.340	5.2	300	984	1480	21500	
D032	0.280	4.3	260	853	0.335	5.2	300	984	1460	21200	
S020	0.330	5.1	280	918	0.380	5.9	310	1017	1460	21200	
D036	0.380	5.9	290	951	0.420	6.5	310	1017	1380	20000	

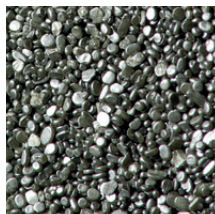
HANDGUN

.38 Special (continued)

Bullet	Recommended Loads				Maximum Loads						Sellier & Bellot
	Powder Charge		Velocity V5		Powder Charge		Velocity V5		Pressure		
	Grams	Grains	m/s	FPS	Grams	Grains	m/s	FPS	Bar	PSI	Cartridge Length
WC 9.60 g 148 grs											
S011	0.170	2.6	200	656	0.250	3.9	290	951	1480	21500	30.20 mm
D032	0.170	2.6	200	656	0.230	3.5	270	886	1450	21000	
S020	0.210	3.2	220	722	0.300	4.6	300	984	1400	20300	
D036	0.230	3.5	240	787	0.310	4.8	300	984	1400	20300	

.357 Magnum

Barrel Length: 150 mm				Case: Sellier & Bellot				Max. Cartridge Length: 40.39 mm			
Twist: 18.72"				Primer: 4.4 SPMP Boxer S&B				Max. Pressure CIP: 3 000 Bar			
Bullet	Recommended Loads				Maximum Loads						Sellier & Bellot
	Powder Charge		Velocity V5		Powder Charge		Velocity V5		Pressure		
	Grams	Grains	m/s	FPS	Grams	Grains	m/s	FPS	Bar	PSI	Cartridge Length
FMJ 10.25 g 158 grs											
S011	0.455	7.0	360	1181	0.500	7.7	385	1263	3000	43500	40.39 mm
D032	0.450	6.9	360	1181	0.490	7.6	380	1246	2940	42700	
S020	0.520	8.0	380	1246	0.560	8.6	400	1312	2950	42800	
D036	0.600	9.3	410	1345	0.630	9.7	440	1443	2970	43100	
D037.1	0.700	10.8	400	1312	0.760	11.7	440	1443	3000	43500	
D037.2	0.700	10.8	390	1279	0.870	13.4	440	1443	3000	43500	
SP 10.25 g 158 grs											
S011	0.455	7.0	360	1181	0.500	7.7	385	1263	3000	43500	40.39 mm
D032	0.450	6.9	360	1181	0.490	7.6	380	1246	2940	42700	
S020	0.520	8.0	380	1246	0.560	8.6	400	1312	2950	42800	
D036	0.600	9.3	410	1345	0.630	9.7	440	1443	2970	43100	
D037.1	0.700	10.8	400	1312	0.760	11.7	440	1443	3000	43500	
D037.2	0.700	10.8	390	1279	0.870	13.4	440	1443	3000	43500	



HANDGUN DATA

HANDGUN

.40 Smith & Wesson											
Barrel Length: 150 mm				Case: Sellier & Bellot				Max. Cartridge Length: 28.83 mm			
Twist: 15.98"				Primer: 4.4 SPMP Boxer S&B				Max. Pressure CIP: 2 250 Bar			
Bullet	Recommended Loads				Maximum Loads						Sellier & Bellot
	Powder Charge		Velocity V5		Powder Charge		Velocity V5		Pressure		
FMJ 11.70 g 180 grs	Grams	Grains	m/s	FPS	Grams	Grains	m/s	FPS	Bar	PSI	Cartridge Length
	S011	0.305	4.7	290	951	0.315	4.9	300	984	2250	
D032	0.290	4.5	290	951	0.310	4.8	300	984	2240	32500	
S020	0.320	4.9	295	968	0.360	5.6	320	1050	2230	32400	
D036	0.400	6.2	300	984	0.450	6.9	340	1115	2200	31900	
D037.1	0.460	7.1	290	951	0.550	8.5	340	1115	2210	32100	
D037.2	0.520	8.0	290	951	0.570	8.8	310	1017	2210	32100	

.44 Remington Mag.											
Barrel Length: 150 mm				Case: Sellier & Bellot				Max. Cartridge Length: 40.89 mm			
Twist: 20.00"				Primer: 5.33 LP Boxer S&B				Max. Pressure CIP: 2 800 Bar			
Bullet	Recommended Loads				Maximum Loads						Sellier & Bellot
	Powder Charge		Velocity V5		Powder Charge		Velocity V5		Pressure		
SP 15.55 g 240 grs	Grams	Grains	m/s	FPS	Grams	Grains	m/s	FPS	Bar	PSI	Cartridge Length
	S011	0.640	9.9	330	1082	0.660	10.2	375	1230	2790	
D032	0.630	9.7	335	1099	0.670	10.3	380	1246	2800	40600	
S020	0.660	10.2	340	1115	0.730	11.3	375	1230	2780	40300	
D036	0.820	12.7	350	1148	0.940	14.5	390	1279	2750	40000	
D037.1	1.000	15.4	360	1181	1.150	17.7	425	1394	2800	40600	
D037.2	1.200	18.5	370	1214	1.300	20.1	415	1361	2800	40600	
S040	1.100	17.0	360	1181	1.380	21.3	425	1394	2790	40500	

.45 Auto / .45 ACP											
Barrel Length: 150 mm				Case: Sellier & Bellot				Max. Cartridge Length: 32.35 mm			
Twist: 15.98"				Primer: 5.33 LP Boxer S&B				Max. Pressure CIP: 1 300 Bar			
Bullet	Recommended Loads				Maximum Loads						Sellier & Bellot
	Powder Charge		Velocity V5		Powder Charge		Velocity V5		Pressure		
FMJ 14.90 g 230 grs	Grams	Grains	m/s	FPS	Grams	Grains	m/s	FPS	Bar	PSI	Cartridge Length
	S011	0.330	5.1	230	754	0.370	5.7	270	886	1280	
D032	0.330	5.1	230	754	0.350	5.4	260	853	1300	18900	
S020	0.360	5.6	240	787	0.410	6.3	220	265	1270	18400	
D036	0.390	6.0	230	754	0.470	7.3	260	853	1280	18600	

.22 Hornet											
Barrel Length: 600 mm				Case: Sellier & Bellot				Max. Cartridge Length: 43.76 mm			
Twist: 16.00"				Primer: 4.4 SRM Boxer S&B				Max. Pressure CIP: 3 000 Bar			
Bullet	Recommended Loads				Maximum Loads					Sellier & Bellot	
FMJ 2.90 g 45 grs	Powder Charge		Velocity V5		Powder Charge		Velocity V5		Pressure		No. 2901
	Grams	Grains	m/s	FPS	Grams	Grains	m/s	FPS	Bar	PSI	Cartridge Length
S040	0.52	8.0	700	2296	0.57	8.8	760	2493	2950	42800	43.70 mm
S053	0.55	8.5	660	2165	0.65	10.0	720	2362	2600	37700	
D063	0.60	9.3	640	2099	0.70	10.8	700	2296	2200	31900	
Bullet	Recommended Loads				Maximum Loads					Sellier & Bellot	
SP 2.90 g 45 grs	Powder Charge		Velocity V5		Powder Charge		Velocity V5		Pressure		No. 2911
	Grams	Grains	m/s	FPS	Grams	Grains	m/s	FPS	Bar	PSI	Cartridge Length
S040	0.52	8.0	700	2296	0.57	8.8	760	2493	2950	42800	43.70 mm
S053	0.55	8.5	660	2165	0.65	10.0	720	2362	2600	37700	
D063	0.60	9.3	640	2099	0.70	10.8	700	2296	2200	31900	
Bullet	Recommended Loads				Maximum Loads					Hornody	
SPSX 3.60 g 55 grs	Powder Charge		Velocity V5		Powder Charge		Velocity V5		Pressure		No. 2260
	Grams	Grains	m/s	FPS	Grams	Grains	m/s	FPS	Bar	PSI	Cartridge Length
S040	0.40	6.2	600	1968	0.48	7.4	640	2099	2950	42800	43.70 mm
S053	0.40	6.2	590	1935	0.50	7.7	620	2034	2700	39200	
D063	0.45	6.9	620	2034	0.55	8.5	640	2099	2650	38500	

.222 Remington											
Barrel Length: 600 mm				Case: Sellier & Bellot				Max. Cartridge Length: 54.10 mm			
Twist: 14.00"				Primer: 4.4 SRM Boxer S&B				Max. Pressure CIP: 3 700 Bar			
Bullet	Recommended Loads				Maximum Loads					Sellier & Bellot	
FMJ 3.24 g 50 grs	Powder Charge		Velocity V5		Powder Charge		Velocity V5		Pressure		No. 2902
	Grams	Grains	m/s	FPS	Grams	Grains	m/s	FPS	Bar	PSI	Cartridge Length
S040	0.90	13.9	850	2788	1.00	15.4	920	3018	3650	53000	52.50 mm
S053	1.10	17.0	900	2952	1.20	18.5	960	3149	3640	52800	
D063	1.15	17.7	920	3018	1.30	20.1	960	3149	3700	53700	
D073.4	1.45	22.4	960	3149	1.55	23.9	1000	3280	3680	53400	
D073.5	1.48	22.8	950	3116	1.58	24.4	1000	3280	3580	52000	
D073.6	1.55	23.9	920	3018	1.60	24.7	950	3116	2800	40600	

RIFLE DATA

.222 Remington (continued)											
Bullet	Recommended Loads				Maximum Loads						Sellier & Bellot
	Powder Charge		Velocity V5		Powder Charge		Velocity V5		Pressure		No. 2913
SP 3.24 g 50 grs	Grams	Grains	m/s	FPS	Grams	Grains	m/s	FPS	Bar	PSI	Cartridge Length
S040	0.90	13.9	850	2788	1.00	15.4	910	2985	3650	53000	52.50 mm
S053	1.10	17.0	900	2952	1.20	18.5	950	3116	3640	52800	
D063	1.15	17.7	920	3018	1.30	20.1	980	3214	3700	53700	
D073.4	1.45	22.4	960	3149	1.55	23.9	990	3247	3680	53400	
D073.5	1.48	22.8	950	3116	1.58	24.4	990	3247	3580	52000	
D073.6	1.55	23.9	920	3018	1.60	24.7	940	3083	2800	40600	

.223 Remington											
Barrel Length: 600 mm					Case: Sellier & Bellot				Max. Cartridge Length: 57.40 mm		
Twist: 12.00"					Primer: 4.4 SR Boxer S&B				Max. Pressure CIP: 4 300 Bar		
Bullet	Recommended Loads				Maximum Loads						Sellier & Bellot
	Powder Charge		Velocity V5		Powder Charge		Velocity V5		Pressure		No. 2903
FMJ 3.60 g 55 grs	Grams	Grains	m/s	FPS	Grams	Grains	m/s	FPS	Bar	PSI	Cartridge Length
S053	1.30	20.1	930	3050	1.37	21.1	975	3198	4260	61800	56.60 mm
D063	1.20	18.5	930	3050	1.28	19.8	980	3214	4300	62400	
S060	1.50	23.1	920	3018	1.60	24.7	971	3185	4200	61000	
D073.4	1.60	24.7	960	3149	1.70	26.2	1010	3313	4150	60200	
D073.5	1.60	24.7	960	3149	1.70	26.2	1026	3365	4240	61500	
D073.6	1.65	25.5	965	3165	1.74	26.8	1015	3329	4020	58300	

Bullet	Recommended Loads				Maximum Loads						Sellier & Bellot
	Powder Charge		Velocity V5		Powder Charge		Velocity V5		Pressure		No. 2914
SP 3.60 g 55 grs	Grams	Grains	m/s	FPS	Grams	Grains	m/s	FPS	Bar	PSI	Cartridge Length
S053	1.30	20.1	930	3050	1.37	21.1	965	3165	4260	61800	56.60 mm
D063	1.20	18.5	930	3050	1.28	19.8	970	3182	4300	62400	
S060	1.50	23.1	920	3018	1.60	24.7	965	3165	4200	61000	
D073.4	1.60	24.7	960	3149	1.70	26.2	1000	3280	4150	60200	
D073.5	1.60	24.7	960	3149	1.70	26.2	1015	3329	4240	61500	
D073.6	1.65	25.5	965	3165	1.74	26.8	1005	3296	4020	53000	

.223 Remington (continued)											
Bullet	Recommended Loads				Maximum Loads						Sierra
	Powder Charge		Velocity V5		Powder Charge		Velocity V5		Pressure		No. 1395
SPBT 4.20 g 65 grs	Grams	Grains	m/s	FPS	Grams	Grains	m/s	FPS	Bar	PSI	Cartridge Length
S060	1.40	21.6	860	2821	1.50	23.1	920	3018	4000	58100	56.60 mm
D073.4	1.50	23.1	860	2821	1.60	24.7	930	3050	4210	61100	
D073.5	1.50	23.1	870	2854	1.60	24.7	940	3083	4150	60200	
D073.6	1.60	24.7	900	2952	1.69	26.1	950	3116	4280	62100	
Bullet	Recommended Loads				Maximum Loads						Sierra
SPBT 4.50 g 69 grs	Powder Charge		Velocity V5		Powder Charge		Velocity V5		Pressure		No. 1380
	Grams	Grains	m/s	FPS	Grams	Grains	m/s	FPS	Bar	PSI	Cartridge Length
S060	1.35	20.8	860	2821	1.45	22.4	900	2952	4000	58100	56.60 mm
D073.4	1.50	23.1	860	2821	1.57	24.2	910	2985	4200	61000	
D073.5	1.50	23.1	865	2837	1.57	24.2	910	2985	4150	60200	
D073.6	1.55	23.9	870	2854	1.65	25.5	910	2985	4260	61800	

5.60 x 50 R Mag.											
Barrel Length: 600 mm				Case: Sellier & Bellot				Max. Cartridge Length: 61.00 mm			
Twist: 13.80"				Primer: 4.4 SPM Boxer S&B				Max. Pressure CIP: 3 400 Bar			
Bullet	Recommended Loads				Maximum Loads						Sellier & Bellot
FMJ 3.24 g 50 grs	Powder Charge		Velocity V5		Powder Charge		Velocity V5		Pressure		No. 2902
	Grams	Grains	m/s	FPS	Grams	Grains	m/s	FPS	Bar	PSI	Cartridge Length
S060	1.50	23.1	930	3050	1.57	24.2	980	3214	3380	49100	58.70 mm
D073.4	1.50	23.1	940	3083	1.65	25.5	1010	3313	3380	49100	
D073.5	1.50	23.1	940	3083	1.65	25.5	1000	3280	3390	49200	
D073.6	1.65	25.5	960	3149	1.70	26.2	1010	3313	3360	48800	
Bullet	Recommended Loads				Maximum Loads						Sellier & Bellot
SP 3.24 g 50 grs	Powder Charge		Velocity V5		Powder Charge		Velocity V5		Pressure		No. 2913
	Grams	Grains	m/s	FPS	Grams	Grains	m/s	FPS	Bar	PSI	Cartridge Length
S060	1.50	23.1	930	3050	1.57	24.2	970	3182	3380	49100	58.70 mm
D073.4	1.50	23.1	940	3083	1.65	25.5	990	3247	3380	49100	
D073.5	1.50	23.1	940	3083	1.65	25.5	1000	3280	3390	49200	
D073.6	1.65	25.5	960	3149	1.70	26.2	1005	3296	3360	48800	

RIFLE

RIFLE DATA

5.60 x 52 R											
Barrel Length: 600 mm					Case: Sellier & Bellot				Max. Cartridge Length: 63.75 mm		
Twist: 10.60"					Primer: 5.3 LR Boxer S&B				Max. Pressure CIP: 3 300 Bar		
Bullet	Recommended Loads				Maximum Loads						Sellier & Bellot
FMJ 4.60 g 70 grs	Powder Charge		Velocity V5		Powder Charge		Velocity V5		Pressure		No. 2904
	Grams	Grains	m/s	FPS	Grams	Grains	m/s	FPS	Bar	PSI	Cartridge Length
S060	1.45	22.4	800	2624	1.55	23.9	860	2821	3250	47200	60.00 mm
S062	1.65	25.5	840	2755	1.73	26.7	870	2854	3220	46700	
S065	1.80	27.8	840	2755	1.85	28.5	860	2821	3120	45300	
Bullet	Recommended Loads				Maximum Loads						Sellier & Bellot
SP 4.60 g 70 grs	Powder Charge		Velocity V5		Powder Charge		Velocity V5		Pressure		No. 2915
	Grams	Grains	m/s	FPS	Grams	Grains	m/s	FPS	Bar	PSI	Cartridge Length
S060	1.45	22.4	800	2624	1.55	23.9	860	2821	3250	47200	60.00 mm
S062	1.65	25.5	840	2755	1.73	26.7	870	2854	3220	46700	
S065	1.80	27.8	840	2755	1.85	28.5	860	2821	3120	45300	

.243 Winchester											
Barrel Length: 600 mm					Case: Sellier & Bellot				Max. Cartridge Length: 68.83 mm		
Twist: 10.00"					Primer: 5.3 LR Boxer S&B				Max. Pressure CIP: 4 150 Bar		
Bullet	Recommended Loads				Maximum Loads						Hornady
SST 6.20 g 95 grs	Powder Charge		Velocity V5		Powder Charge		Velocity V5		Pressure		No. 24532
	Grams	Grains	m/s	FPS	Grams	Grains	m/s	FPS	Bar	PSI	Cartridge Length
S060	2.10	32.4	830	2722	2.20	33.9	860	2821	4140	60100	67.00 mm
S062	2.20	33.9	815	2673	2.30	35.5	850	2788	4000	58100	
S065	2.25	34.7	840	2755	2.40	37.0	870	2854	4060	58900	
S070	2.40	37.0	840	2755	2.70	41.7	870	2854	3900	56600	
Bullet	Recommended Loads				Maximum Loads						Sellier & Bellot
SP 6.50 g 100 grs	Powder Charge		Velocity V5		Powder Charge		Velocity V5		Pressure		No. 2921
	Grams	Grains	m/s	FPS	Grams	Grains	m/s	FPS	Bar	PSI	Cartridge Length
S060	2.00	30.9	810	2657	2.10	32.4	830	2722	3980	57800	67.00 mm
S062	2.10	32.4	810	2657	2.30	35.5	850	2788	4120	59800	
S065	2.20	33.9	830	2722	2.40	37.0	860	2821	4040	58600	
S070	2.40	37.0	830	2722	2.65	40.9	860	2821	4050	58800	

RIFLE

.243 Winchester (continued)											
Bullet	Recommended Loads				Maximum Loads						Nosler
PARTITION 6.50 g 100 grs	Powder Charge		Velocity V5		Powder Charge		Velocity V5		Pressure		No. 35642
	Grams	Grains	m/s	FPS	Grams	Grains	m/s	FPS	Bar	PSI	Cartridge Length
S060	2.05	31.6	800	2624	2.15	33.2	840	2755	4120	59800	68.80 mm
S062	2.10	32.4	810	2657	2.25	34.7	840	2755	4130	59900	
S065	2.10	32.4	810	2657	2.30	35.5	850	2788	4040	58600	
S070	2.40	37.0	800	2624	2.65	40.9	860	2821	4050	58800	
Bullet	Recommended Loads				Maximum Loads						Hornady
RN 6.50 g 100 grs	Powder Charge		Velocity V5		Powder Charge		Velocity V5		Pressure		No. 2921
	Grams	Grains	m/s	FPS	Grams	Grains	m/s	FPS	Bar	PSI	Cartridge Length
S060	2.10	32.4	805	2640	2.25	34.7	850	2788	4120	59800	66.40 mm
S062	2.30	35.5	810	2657	2.50	38.6	860	2821	4050	58800	
S065	2.30	35.5	800	2624	2.60	40.1	880	2886	4080	59200	
S070	2.60	40.1	800	2624	2.90	44.7	870	2854	3750	54400	

6.5 x 52 R											
Barrel Length: 600 mm				Case: Sellier & Bellot				Max. Cartridge Length: 64.50 mm			
Twist: 10.20"				Primer: 5.3 LR Boxer S&B				Max. Pressure CIP: 2 450 Bar			
Bullet	Recommended Loads				Maximum Loads						Sellier & Bellot
SP 7.60 g 117 grs	Powder Charge		Velocity V5		Powder Charge		Velocity V5		Pressure		No. 2925
	Grams	Grains	m/s	FPS	Grams	Grains	m/s	FPS	Bar	PSI	Cartridge Length
S060	1.30	20.1	620	2034	1.38	21.3	670	2198	2400	34800	64.50 mm
S062	1.45	22.4	635	2083	1.60	24.7	685	2247	2430	35300	
S065	1.60	24.7	635	2083	1.70	26.2	680	2230	2390	34700	
S070	1.70	26.2	640	2099	1.80	27.8	680	2230	2360	34300	



RIFLE DATA

6.5 x 55 SE											
Barrel Length: 600 mm					Case: Sellier & Bellot				Max. Cartridge Length: 80.00 mm		
Twist: 8.66"					Primer: 5.3 LR Boxer S&B				Max. Pressure CIP: 3 800 Bar		
Bullet	Recommended Loads				Maximum Loads						Sellier & Bellot
SP 8.50 g 131 grs	Powder Charge		Velocity V5		Powder Charge		Velocity V5		Pressure		No. 2923
	Grams	Grains	m/s	FPS	Grams	Grains	m/s	FPS	Bar	PSI	Cartridge Length
S062	2.35	36.3	750	2460	2.45	37.8	780	2558	3795	55100	75.30 mm
S065	2.55	39.3	755	2476	2.65	40.9	790	2591	3760	54600	
S070	2.70	41.7	760	2493	2.85	44.0	800	2624	3710	53800	
Bullet	Recommended Loads				Maximum Loads						Lapua
HPBT 9.00 g 139 grs	Powder Charge		Velocity V5		Powder Charge		Velocity V5		Pressure		No. GB 458
	Grams	Grains	m/s	FPS	Grams	Grains	m/s	FPS	Bar	PSI	Cartridge Length
S062	2.25	34.7	705	2312	2.45	37.8	760	2493	3770	54700	79.50
S065	2.40	37.0	750	2460	2.60	40.1	780	2558	3790	55000	
S070	2.60	40.1	750	2460	2.85	44.0	775	2542	3650	53000	
Bullet	Recommended Loads				Maximum Loads						Hornady
GR RN 9.00 g 139 grs	Powder Charge		Velocity V5		Powder Charge		Velocity V5		Pressure		No. 2640
	Grams	Grains	m/s	FPS	Grams	Grains	m/s	FPS	Bar	PSI	Cartridge Length
S062	2.30	35.5	670	2198	2.45	37.8	720	2362	3790	55000	75.70
S065	2.30	35.5	665	2181	2.50	38.6	720	2362	3720	54000	
S070	2.70	41.7	750	2460	2.95	45.5	750	2460	3790	55000	
Bullet	Recommended Loads				Maximum Loads						Sellier & Bellot
SP 9.10 g 140 grs	Powder Charge		Velocity V5		Powder Charge		Velocity V5		Pressure		No. 2928
	Grams	Grains	m/s	FPS	Grams	Grains	m/s	FPS	Bar	PSI	Cartridge Length
S062	2.25	34.7	720	2362	2.35	36.3	750	2460	3780	54900	75.30
S065	2.45	37.8	730	2394	2.55	39.3	770	2526	3760	54600	
S070	2.60	40.1	750	2460	2.75	42.4	790	2591	3710	53800	
Bullet	Recommended Loads				Maximum Loads						Sellier & Bellot
FMJ-BT 9.10 g 140 grs	Powder Charge		Velocity V5		Powder Charge		Velocity V5		Pressure		No. 2905
	Grams	Grains	m/s	FPS	Grams	Grains	m/s	FPS	Bar	PSI	Cartridge Length
S062	2.25	34.7	720	2362	2.35	36.3	780	2558	3780	54900	78.00
S065	2.45	37.8	730	2394	2.55	39.3	770	2526	3760	54600	
S070	2.60	40.1	750	2460	2.75	42.4	790	2591	3710	53800	

RIFLE

6.5 x 57											
Barrel Length: 600 mm				Case: Sellier & Bellot				Max. Cartridge Length: 82.00 mm			
Twist: 7.87"				Primer: 5.3 LR Boxer S&B				Max. Pressure CIP: 3 900 Bar			
Bullet	Recommended Loads				Maximum Loads				Sellier & Bellot		
SP 8.50 g 131 grs	Powder Charge		Velocity V5		Powder Charge		Velocity V5		Pressure		No. 2923
	Grams	Grains	m/s	FPS	Grams	Grains	m/s	FPS	Bar	PSI	Cartridge Length
S060	2.15	33.2	760	2493	2.35	36.3	790	2591	3780	54900	77.00 mm
S062	2.50	38.6	745	2444	2.60	40.1	780	2558	3880	56300	
S065	2.60	40.1	750	2460	2.80	43.2	800	2624	3860	56000	
S070	2.75	42.4	750	2460	2.95	45.5	785	2575	3850	55900	

6.5 x 57 R											
Barrel Length: 600 mm				Case: Sellier & Bellot				Max. Cartridge Length: 82.00 mm			
Twist: 7.87"				Primer: 5.3 LR Boxer S&B				Max. Pressure CIP: 3 300 Bar			
Bullet	Recommended Loads				Maximum Loads				Sellier & Bellot		
SP 8.50 g 131 grs	Powder Charge		Velocity V5		Powder Charge		Velocity V5		Pressure		No. 2923
	Grams	Grains	m/s	FPS	Grams	Grains	m/s	FPS	Bar	PSI	Cartridge Length
S060	2.15	33.2	760	2493	2.30	35.5	780	2558	3290	47800	77.00 mm
S062	2.40	37.0	745	2444	2.55	39.3	790	2591	3290	47800	
S065	2.60	40.1	760	2493	2.75	42.4	810	2657	3300	47900	
S070	2.75	42.4	770	2526	2.90	44.7	810	2657	3268	47400	

.270 Winchester											
Barrel Length: 600 mm				Case: Sellier & Bellot				Max. Cartridge Length: 84.84 mm			
Twist: 10.00"				Primer: 5.3 LR Boxer S&B				Max. Pressure CIP: 4 300 Bar			
Bullet	Recommended Loads				Maximum Loads				Sellier & Bellot		
SP 9.70 g 150 grs	Powder Charge		Velocity V5		Powder Charge		Velocity V5		Pressure		No. 2927
	Grams	Grains	m/s	FPS	Grams	Grains	m/s	FPS	Bar	PSI	Cartridge Length
S062	2.95	45.5	810	2657	3.15	48.6	860	2821	4180	60700	82.30 mm
S065	3.10	47.8	800	2624	3.40	52.5	870	2854	4190	60800	
S070	3.40	52.5	800	2624	3.60	55.5	880	2886	4250	61700	
Bullet	Recommended Loads				Maximum Loads				Hornady		
SST 9.70 g 150 grs	Powder Charge		Velocity V5		Powder Charge		Velocity V5		Pressure		No. 27402
	Grams	Grains	m/s	FPS	Grams	Grains	m/s	FPS	Bar	PSI	Cartridge Length
S062	3.00	46.3	790	2591	3.15	48.6	830	2722	4180	60700	81.50 mm
S065	3.10	47.8	800	2624	3.25	50.1	850	2788	4240	61500	
S070	3.40	52.5	780	2558	3.70	57.1	850	2788	4150	60200	

RIFLE DATA

.270 Winchester (continued)											
Bullet	Recommended Loads				Maximum Loads						Hornady
RN 9.70 g 150 grs	Powder Charge		Velocity V5		Powder Charge		Velocity V5		Pressure		No. 2745
	Grams	Grains	m/s	FPS	Grams	Grains	m/s	FPS	Bar	PSI	Cartridge Length
S062	3.20	49.4	800	2624	3.40	52.5	860	2821	4280	62100	81.50 mm
S065	3.20	49.4	800	2624	3.40	52.5	860	2821	4120	59800	
S070	3.60	55.5	820	2690	3.90	60.2	875	2870	4150	60200	

7 x 57											
Barrel Length: 600 mm				Case: Sellier & Bellot				Max. Cartridge Length: 78.00 mm			
Twist: 8.66"				Primer: 5.3 LR Boxer S&B				Max. Pressure CIP: 3 900 Bar			
Bullet	Recommended Loads				Maximum Loads						Hornady
V-MAX 7.80 g 120 grs	Powder Charge		Velocity V5		Powder Charge		Velocity V5		Pressure		No. 22810
	Grams	Grains	m/s	FPS	Grams	Grains	m/s	FPS	Bar	PSI	Cartridge Length
S060	2.65	40.9	850	2788	2.80	43.2	900	2952	3875	56200	75.00 mm
D073.6	2.70	41.7	820	2690	3.10	47.8	940	3083	3840	55700	
S062	2.90	44.7	830	2722	3.20	49.4	920	3018	3680	53400	
S065	2.90	44.7	820	2690	3.20	49.4	910	2985	3620	52500	
S070	2.95	45.5	790	2591	3.20	49.4	820	2690	3750	54400	
Bullet	Recommended Loads				Maximum Loads						Sellier & Bellot
SP 9.00 g 139 grs	Powder Charge		Velocity V5		Powder Charge		Velocity V5		Pressure		No. 2931
	Grams	Grains	m/s	FPS	Grams	Grains	m/s	FPS	Bar	PSI	Cartridge Length
S060	2.45	37.8	790	2591	2.70	41.7	835	2739	3850	55900	73.00 mm
D073.6	2.65	40.9	790	2591	3.00	46.3	850	2788	3810	55300	
S062	2.80	43.2	800	2624	2.90	44.7	845	2772	3800	55200	
S065	2.85	44.0	800	2624	3.15	48.6	840	2755	3750	54400	
S070	2.95	45.5	790	2591	3.20	49.4	820	2690	3750	54400	
S070	2.95	45.5	790	2591	3.25	50.1	820	2690	3750	54400	
Bullet	Recommended Loads				Maximum Loads						Sellier & Bellot
FMJ 9.10 g 140 grs	Powder Charge		Velocity V5		Powder Charge		Velocity V5		Pressure		No. 2955
	Grams	Grains	m/s	FPS	Grams	Grains	m/s	FPS	Bar	PSI	Cartridge Length
S060	2.45	37.8	790	2591	2.70	41.7	840	2755	3875	56200	78.00 mm
D073.6	2.65	40.9	790	2591	3.00	46.3	850	2788	3870	56200	
S062	2.80	43.2	720	2362	2.90	44.7	845	2772	3880	56300	
S065	2.85	44.0	800	2624	3.20	49.4	850	2788	3820	55400	
S070	2.95	45.5	790	2591	3.25	50.1	820	2690	3750	54400	
S070	2.95	45.5	790	2591	3.25	50.1	820	2690	3750	54400	

7 x 57 (continued)											
Bullet	Recommended Loads				Maximum Loads						Hornady
GR SST 10.00 g 154 grs	Powder Charge		Velocity V5		Powder Charge		Velocity V5		Pressure		No. 28302
	Grams	Grains	m/s	FPS	Grams	Grains	m/s	FPS	Bar	PSI	Cartridge Length
S060	2.30	35.5	720	2362	2.50	38.6	780	2558	3890	56500	75.70 mm
D073.6	2.55	39.3	760	2493	2.70	41.7	800	2624	3800	55200	
S062	2.70	41.7	760	2493	2.85	44.0	810	2657	3840	55700	
S065	2.75	42.4	770	2526	2.90	44.7	810	2657	3780	54900	
Bullet	Recommended Loads				Maximum Loads						Sellier & Bellot
HPC 10.20 g 158 grs	Powder Charge		Velocity V5		Powder Charge		Velocity V5		Pressure		No. 2981
	Grams	Grains	m/s	FPS	Grams	Grains	m/s	FPS	Bar	PSI	Cartridge Length
S060	2.25	34.7	730	2394	2.45	37.8	763	2503	3875	56200	78.00 mm
D073.6	2.45	37.8	730	2394	2.70	41.7	770	2526	3870	56200	
S062	2.55	39.3	740	2427	2.75	42.4	770	2526	3880	56300	
S065	2.70	41.7	750	2460	2.95	45.5	775	2542	3760	54600	
Bullet	Recommended Loads				Maximum Loads						Norma
VULKAN 11.00 g 170 grs	Powder Charge		Velocity V5		Powder Charge		Velocity V5		Pressure		No. 67006
	Grams	Grains	m/s	FPS	Grams	Grains	m/s	FPS	Bar	PSI	Cartridge Length
S060	2.35	36.3	710	2329	2.50	38.6	735	2411	3820	55400	74.70 mm
D073.6	2.45	37.8	710	2329	2.75	42.4	760	2493	3770	54700	
S062	2.55	39.3	720	2362	2.85	44.0	760	2493	3720	54000	
S065	2.70	41.7	730	2394	2.90	44.7	770	2526	3780	54900	
Bullet	Recommended Loads				Maximum Loads						Sellier & Bellot
SPCE 11.20 g 173 grs	Powder Charge		Velocity V5		Powder Charge		Velocity V5		Pressure		No. 2932
	Grams	Grains	m/s	FPS	Grams	Grains	m/s	FPS	Bar	PSI	Cartridge Length
S060	2.25	34.7	710	2329	2.45	37.8	743	2437	3875	56200	77.00 mm
D073.6	2.45	37.8	710	2329	2.65	40.9	760	2493	3870	56200	
S062	2.55	39.3	720	2362	2.75	42.4	751	2463	3880	56300	
S065	2.70	41.7	730	2394	2.95	45.5	755	2476	3880	56300	
Bullet	Recommended Loads				Maximum Loads						Nosler
PARTITION 11.30 g 175 grs	Powder Charge		Velocity V5		Powder Charge		Velocity V5		Pressure		No. 35645
	Grams	Grains	m/s	FPS	Grams	Grains	m/s	FPS	Bar	PSI	Cartridge Length
S060	2.30	35.5	690	2263	2.45	37.8	720	2362	3800	55200	78.00 mm
D073.6	2.40	37.0	700	2296	2.60	40.1	745	2444	3810	55300	
S062	2.50	38.6	700	2296	2.80	43.2	755	2476	3840	55700	
S065	2.70	41.7	720	2362	2.85	44.0	760	2493	3860	56000	

RIFLE DATA

7 x 57 R											
Barrel Length: 600 mm				Case: Sellier & Bellot				Max. Cartridge Length: 78.00 mm			
Twist: 8.66"				Primer: 5.3 LR Boxer S&B				Max. Pressure CIP: 3 400 Bar			
Bullet	Recommended Loads				Maximum Loads					Hornady	
	Powder Charge		Velocity V5		Powder Charge		Velocity V5		Pressure		No. 22810
V-MAX 7.80 g 120 grs	Grams	Grains	m/s	FPS	Grams	Grains	m/s	FPS	Bar	PSI	Cartridge Length
S060	2.50	38.6	820	2690	2.70	41.7	860	2821	3400	49400	75.00 mm
D073.6	2.60	40.1	810	2657	2.95	45.5	860	2821	3370	48900	
S062	2.80	43.2	830	2722	3.10	47.8	870	2854	3380	49100	
S065	2.80	43.2	820	2690	3.10	47.8	870	2854	3360	48800	
Bullet	Recommended Loads				Maximum Loads					Sellier & Bellot	
SP 9.00 g 139 grs	Powder Charge		Velocity V5		Powder Charge		Velocity V5		Pressure		No. 2931
	Grams	Grains	m/s	FPS	Grams	Grains	m/s	FPS	Bar	PSI	Cartridge Length
S060	2.40	37.0	780	2558	2.65	40.9	810	2657	3400	49400	73.00 mm
D073.6	2.55	39.3	780	2558	2.90	44.7	835	2739	3380	49100	
S062	2.70	41.7	790	2591	3.00	46.3	825	2706	3260	47300	
S065	2.75	42.4	790	2591	3.05	47.1	830	2722	3390	49200	
Bullet	Recommended Loads				Maximum Loads					Sellier & Bellot	
FMJ 9.10 g 140 grs	Powder Charge		Velocity V5		Powder Charge		Velocity V5		Pressure		No. 2955
	Grams	Grains	m/s	FPS	Grams	Grains	m/s	FPS	Bar	PSI	Cartridge Length
S060	2.40	37.0	770	2526	2.65	40.9	810	2657	3375	49000	78.00 mm
D073.6	2.55	39.3	770	2526	2.90	44.7	830	2722	3370	48900	
S062	2.70	41.7	720	2362	2.95	45.5	825	2706	3380	49100	
S065	2.75	42.4	780	2558	3.10	47.8	830	2722	3380	49100	
Bullet	Recommended Loads				Maximum Loads					Hornady	
GR SST 10.00 g 154 grs	Powder Charge		Velocity V5		Powder Charge		Velocity V5		Pressure		No. 28302
	Grams	Grains	m/s	FPS	Grams	Grains	m/s	FPS	Bar	PSI	Cartridge Length
S060	2.20	33.9	700	2296	2.40	37.0	740	2427	3390	49200	75.70 mm
D073.6	2.40	37.0	730	2394	2.60	40.1	760	2493	3400	49400	
S062	2.60	40.1	740	2427	2.75	42.4	770	2526	3360	48800	
S065	2.65	40.9	750	2460	2.80	43.2	780	2558	3380	49100	
Bullet	Recommended Loads				Maximum Loads					Sellier & Bellot	
HPC 10.20 g 158 grs	Powder Charge		Velocity V5		Powder Charge		Velocity V5		Pressure		No. 2981
	Grams	Grains	m/s	FPS	Grams	Grains	m/s	FPS	Bar	PSI	Cartridge Length
S060	2.15	33.2	700	2296	2.30	35.5	740	2427	3375	49000	78.00 mm
D073.6	2.35	36.3	700	2296	2.60	40.1	750	2460	3370	48900	
S062	2.45	37.8	710	2329	2.75	42.4	755	2476	3380	49100	
S065	2.60	40.1	710	2329	2.85	44.0	750	2460	3360	48800	

7 x 57 R (continued)											
Bullet	Recommended Loads				Maximum Loads						Norma
VULKAN 11.00 g 170 grs	Powder Charge		Velocity V5		Powder Charge		Velocity V5		Pressure		No. 67006
	Grams	Grains	m/s	FPS	Grams	Grains	m/s	FPS	Bar	PSI	Cartridge Length
S060	2.20	33.9	680	2230	2.40	37.0	700	2296	3320	48200	74.70 mm
D073.6	2.25	34.7	675	2214	2.55	39.3	710	2329	3370	48900	
S062	2.45	37.8	680	2230	2.75	42.4	730	2394	3360	48800	
S065	2.60	40.1	710	2329	2.80	43.2	740	2427	3380	49100	
Bullet	Recommended Loads				Maximum Loads						Sellier & Bellot
SPCE 11.20 g 173 grs	Powder Charge		Velocity V5		Powder Charge		Velocity V5		Pressure		No. 2932
	Grams	Grains	m/s	FPS	Grams	Grains	m/s	FPS	Bar	PSI	Cartridge Length
S060	2.15	33.2	670	2198	2.30	35.5	695	2280	3390	49200	77.00 mm
D073.6	2.25	34.7	680	2230	2.40	37.0	710	2329	3380	49100	
S062	2.45	37.8	700	2296	2.75	42.4	710	2329	3340	48500	
S065	2.60	40.1	700	2296	2.80	43.2	730	2394	3320	48200	
Bullet	Recommended Loads				Maximum Loads						Nosler
PARTITION 11.30 g 175 grs	Powder Charge		Velocity V5		Powder Charge		Velocity V5		Pressure		No. 35645
	Grams	Grains	m/s	FPS	Grams	Grains	m/s	FPS	Bar	PSI	Cartridge Length
S060	2.10	32.4	670	2198	2.30	35.5	690	2263	3400	49400	78.00 mm
D073.6	2.20	33.9	675	2214	2.45	37.8	700	2296	3350	48600	
S062	2.40	37.0	680	2230	2.70	41.7	710	2329	3340	48500	
S065	2.60	40.1	685	2247	2.75	42.4	720	2362	3360	48800	

7 x 64											
Barrel Length: 600 mm				Case: Sellier & Bellot				Max. Cartridge Length: 84.00 mm			
Twist: 8.66"				Primer: 5.3 LR Boxer S&B				Max. Pressure CIP: 4 150 Bar			
Bullet	Recommended Loads				Maximum Loads						Hornady
V-MAX 7.80 g 120 grs	Powder Charge		Velocity V5		Powder Charge		Velocity V5		Pressure		No. 22810
	Grams	Grains	m/s	FPS	Grams	Grains	m/s	FPS	Bar	PSI	Cartridge Length
D073.6	3.20	49.4	920	3018	3.35	51.7	970	3182	4150	60200	82.00 mm
S062	3.35	51.7	910	2985	3.55	54.8	945	3100	4120	59800	
S065	3.35	51.7	900	2952	3.60	55.5	970	3182	4080	59200	

RIFLE DATA

7 x 64 (continued)											
Bullet	Recommended Loads				Maximum Loads						Sellier & Bellot
	Powder Charge		Velocity V5		Powder Charge		Velocity V5		Pressure		No. 2931
SP 9.00 g 139 grs	Grams	Grains	m/s	FPS	Grams	Grains	m/s	FPS	Bar	PSI	Cartridge Length
S060	3.00	46.3	800	2624	3.20	49.4	860	2821	4100	59500	81.50 mm
D073.6	3.10	47.8	800	2624	3.30	50.9	870	2854	3980	57800	
S062	3.15	48.6	810	2657	3.35	51.7	880	2886	4098	59500	
S065	3.40	52.5	820	2690	3.60	55.5	890	2919	4100	59500	
S070	3.65	56.3	840	2755	3.80	58.6	900	2952	4130	59900	
Bullet	Recommended Loads				Maximum Loads						Sellier & Bellot
FMJ 9.10 g 140 grs	Powder Charge		Velocity V5		Powder Charge		Velocity V5		Pressure		No. 2955
	Grams	Grains	m/s	FPS	Grams	Grains	m/s	FPS	Bar	PSI	Cartridge Length
S060	3.00	46.3	800	2624	3.20	49.4	860	2821	3875	56200	84.00 mm
D073.6	3.10	47.8	840	2755	3.30	50.9	870	2854	3870	56200	
S062	3.15	48.6	810	2657	3.35	51.7	880	2886	3880	56300	
S065	3.40	52.5	820	2690	3.60	55.5	890	2919	3820	55400	
S070	3.65	56.3	840	2755	3.80	58.6	900	2952	3750	54400	
Bullet	Recommended Loads				Maximum Loads						Hornady
GR SST 10.00 g 154 grs	Powder Charge		Velocity V5		Powder Charge		Velocity V5		Pressure		No. 28302
	Grams	Grains	m/s	FPS	Grams	Grains	m/s	FPS	Bar	PSI	Cartridge Length
D062	2.90	44.7	765	2509	3.20	49.4	850	2788	4140	60100	82.60 mm
S065	2.95	45.5	750	2460	3.25	50.1	850	2788	4120	59800	
S070	3.50	54.0	790	2591	3.70	57.1	840	2755	3700	53700	
Bullet	Recommended Loads				Maximum Loads						Sellier & Bellot
HPC 10.20 g 158 grs	Powder Charge		Velocity V5		Powder Charge		Velocity V5		Pressure		No. 2981
	Grams	Grains	m/s	FPS	Grams	Grains	m/s	FPS	Bar	PSI	Cartridge Length
S062	2.90	44.7	780	2558	3.10	47.8	820	2690	4150	60200	83.60 mm
S065	3.20	49.4	800	2624	3.30	50.9	830	2722	4090	59400	
S070	3.35	51.7	810	2657	3.50	54.0	840	2755	4110	59700	
Bullet	Recommended Loads				Maximum Loads						Norma
VULKAN 11.00 g 170 grs	Powder Charge		Velocity V5		Powder Charge		Velocity V5		Pressure		No. 67006
	Grams	Grains	m/s	FPS	Grams	Grains	m/s	FPS	Bar	PSI	Cartridge Length
D062	2.90	44.7	750	2460	3.15	48.6	800	2624	3950	57300	81.50 mm
S065	3.00	46.3	760	2493	3.25	50.1	800	2624	3950	57300	
S070	3.15	48.6	710	2329	3.30	50.9	760	2493	3870	56200	

RIFLE

7 x 64 (continued)

Bullet	Recommended Loads				Maximum Loads						Sellier & Bellot
	Powder Charge		Velocity V5		Powder Charge		Velocity V5		Pressure		No. 2932
	Grams	Grains	m/s	FPS	Grams	Grains	m/s	FPS	Bar	PSI	Cartridge Length
SPCE 11.20 g 173 grs											
S062	2.90	44.7	755	2476	3.05	47.1	800	2624	4130	59900	82.50 mm
S065	3.10	47.8	760	2493	3.25	50.1	805	2640	4085	59300	
S070	3.25	50.1	760	2493	3.45	53.2	810	2657	4130	59900	

7 x 65 R

Barrel Length: 600 mm				Case: Sellier & Bellot				Max. Cartridge Length: 83.60 mm			
Twist: 8.66"				Primer: 5.3 LR Boxer S&B				Max. Pressure CIP: 3 800 Bar			
Bullet	Recommended Loads				Maximum Loads						Sellier & Bellot
	Powder Charge		Velocity V5		Powder Charge		Velocity V5		Pressure		No. 2931
	Grams	Grains	m/s	FPS	Grams	Grains	m/s	FPS	Bar	PSI	Cartridge Length
SP 9.00 g 139 grs											
S060	2.95	45.5	810	2657	3.05	47.1	850	2788	3785	54900	81.20 mm
D073.6	3.10	47.8	830	2722	3.20	49.4	860	2821	3760	54600	
S062	3.25	50.1	820	2690	3.40	52.5	855	2804	3795	55100	
S065	3.40	52.5	830	2722	3.55	54.8	865	2837	3740	54300	
S070	3.60	55.5	830	2722	3.75	57.9	855	2804	3760	54600	
FMJ 9.10 g 140 grs											
S060	2.95	45.5	810	2657	3.05	47.1	850	2788	3790	55000	83.60 mm
D073.6	3.10	47.8	830	2722	3.20	49.4	860	2821	3785	54900	
S062	3.15	48.6	830	2722	3.30	50.9	865	2837	3790	55000	
S065	3.40	52.5	830	2722	3.55	54.8	865	2837	3752	54500	
S070	3.60	55.5	830	2722	3.75	57.9	850	2788	3770	54700	
HPC 10.20 g 158 grs											
S060	2.65	40.9	740	2427	2.85	44.0	790	2591	3820	55400	83.60 mm
D073.6	2.85	44.0	750	2460	3.00	46.3	795	2608	3830	55600	
S062	2.80	43.2	770	2526	3.20	49.4	800	2624	3800	55200	
S065	3.20	49.4	790	2591	3.30	50.9	815	2673	3710	53800	
S070	3.35	51.7	785	2575	3.50	54.0	820	2690	3720	54000	

RIFLE DATA

7 x 65 R (continued)											
Bullet	Recommended Loads				Maximum Loads						Sellier & Bellot
SPCE 11.90 g 173 grs	Powder Charge		Velocity V5		Powder Charge		Velocity V5		Pressure		No. 2932
	Grams	Grains	m/s	FPS	Grams	Grains	m/s	FPS	Bar	PSI	Cartridge Length
S060	2.60	40.1	725	2378	2.80	43.2	750	2460	3800	55200	82.50 mm
D073.6	2.80	43.2	730	2394	2.95	45.5	765	2509	3790	55000	
S062	3.00	46.3	740	2427	3.35	51.7	760	2493	3790	55000	
S065	3.10	47.8	760	2493	3.25	50.1	785	2575	3790	55000	
S070	3.25	50.1	740	2427	3.45	53.2	750	2460	3770	54700	

7 mm Remington Mag.											
Barrel Length: 650 mm					Case: Sellier & Bellot					Max. Cartridge Length: 83.57 mm	
Twist: 9.49"					Primer: 5.3 LR Boxer S&B					Max. Pressure CIP: 4 300 Bar	
Bullet	Recommended Loads				Maximum Loads						Sellier & Bellot
SPCE 11.20 g 173 grs	Powder Charge		Velocity V5		Powder Charge		Velocity V5		Pressure		No. 2932
	Grams	Grains	m/s	FPS	Grams	Grains	m/s	FPS	Bar	PSI	Cartridge Length
S060	3.10	47.8	810	2657	3.25	50.1	830	2722	4180	60700	80.00 mm
D073.6	3.25	50.1	800	2624	3.45	53.2	830	2722	4280	62100	
S062	3.30	50.9	810	2657	3.45	53.2	840	2755	4250	61700	
S065	3.50	54.0	810	2657	3.75	57.9	845	2772	4290	62300	
S070	3.70	57.1	820	2690	3.90	60.2	855	2804	4210	61100	

.303 British											
Barrel Length: 600 mm					Case: Sellier & Bellot					Max. Cartridge Length: 78.11 mm	
Twist: 9.46"					Primer: 5.3 LR Boxer S&B					Max. Pressure CIP: 3 650 Bar	
Bullet	Recommended Loads				Maximum Loads						Sellier & Bellot
SP 9.70 g 150 grs	Powder Charge		Velocity V5		Powder Charge		Velocity V5		Pressure		No. 2939
	Grams	Grains	m/s	FPS	Grams	Grains	m/s	FPS	Bar	PSI	Cartridge Length
S060	2.55	39.3	790	2591	2.70	41.7	820	2690	3640	52800	72.60 mm
D073.4	2.65	40.9	795	2608	2.85	44.0	825	2706	3600	52300	
D073.5	2.65	40.9	790	2591	2.85	44.0	830	2722	3620	52500	
D073.6	2.75	42.4	800	2624	2.95	45.5	840	2755	3610	52400	
S062	2.80	43.2	810	2657	2.95	45.5	850	2788	3660	53100	
Bullet	Recommended Loads				Maximum Loads						Sellier & Bellot
FMJ 11.70 g 180 grs	Powder Charge		Velocity V5		Powder Charge		Velocity V5		Pressure		No. 2909
	Grams	Grains	m/s	FPS	Grams	Grains	m/s	FPS	Bar	PSI	Cartridge Length
S060	2.40	37.0	715	2345	2.50	38.6	740	2427	3620	52500	77.50 mm
D073.4	2.50	38.6	720	2362	2.60	40.1	745	2444	3600	52300	
D073.5	2.50	38.6	715	2345	2.65	40.9	755	2476	3650	53000	
D073.6	2.55	39.3	715	2345	2.75	42.4	760	2493	3640	52800	
S062	2.65	40.9	730	2394	2.75	42.4	760	2493	3610	52400	

.30 Carbine											
Barrel Length: 600 mm				Case: Sellier & Bellot				Max. Cartridge Length: 42.67 mm			
Twist: 20.00"				Primer: 5.3 LR Boxer S&B				Max. Pressure CIP: 3 200 Bar			
Bullet	Recommended Loads				Maximum Loads				Sellier & Bellot		
	Powder Charge		Velocity V5		Powder Charge		Velocity V5		Pressure		No. 2960
FMJ 7.10 g 110 grs	Grams	Grains	m/s	FPS	Grams	Grains	m/s	FPS	Bar	PSI	Cartridge Length
	S040	0.75	11.6	600	1968	0.85	13.1	645	2116	3175	46100
D063	0.85	13.1	605	1984	0.95	14.7	650	2132	3189	46300	

.30-30 Winchester											
Barrel Length: 600 mm				Case: Sellier & Bellot				Max. Cartridge Length: 64.77 mm			
Twist: 12.00"				Primer: 5.3 LR Boxer S&B				Max. Pressure CIP: 3 200 Bar			
Bullet	Recommended Loads				Maximum Loads				Sellier & Bellot		
	Powder Charge		Velocity V5		Powder Charge		Velocity V5		Pressure		No. 2934
SP 9.70 g 150 grs	Grams	Grains	m/s	FPS	Grams	Grains	m/s	FPS	Bar	PSI	Cartridge Length
	S060	1.80	27.8	680	2230	1.90	29.3	720	2362	3190	46300
D073.4	1.90	29.3	650	2132	2.05	31.6	710	2329	3150	45700	
D073.5	2.00	30.9	650	2132	2.15	33.2	710	2329	3140	45600	
D073.6	2.05	31.6	680	2230	2.25	34.7	740	2427	3165	45900	

.308 Winchester											
Barrel Length: 600 mm				Case: Sellier & Bellot				Max. Cartridge Length: 71.12 mm			
Twist: 12.00"				Primer: 5.3 LR Boxer S&B				Max. Pressure CIP: 4 150 Bar			
Bullet	Recommended Loads				Maximum Loads				Sellier & Bellot		
	Powder Charge		Velocity V5		Powder Charge		Velocity V5		Pressure		No. 2908
FMJ 9.55 g 147 grs	Grams	Grains	m/s	FPS	Grams	Grains	m/s	FPS	Bar	PSI	Cartridge Length
	S060	2.70	41.7	825	2706	2.85	44.0	860	2821	4125	59900
D073.4	2.80	43.2	835	2739	2.95	45.5	865	2837	4080	59200	
D073.5	2.80	43.2	840	2755	2.98	46.0	875	2870	4160	60400	
D073.6	2.90	44.7	850	2788	3.00	46.3	875	2870	4080	59200	
S062	2.80	43.2	790	2591	2.95	45.5	826	2709	3500	50800	
S065	2.85	44.0	735	2411	3.00	46.3	879	2883	3120	45300	
S070	2.70	41.7	670	2198	2.90	44.7	735	2411	2640	38300	

RIFLE

RIFLE DATA

.308 Winchester (continued)											
Bullet	Recommended Loads				Maximum Loads						Sellier & Bellot
SPCE 9.70 g 150 grs	Powder Charge		Velocity V5		Powder Charge		Velocity V5		Pressure		No. 2936
	Grams	Grains	m/s	FPS	Grams	Grains	m/s	FPS	Bar	PSI	Cartridge Length
S060	2.65	40.9	820	2690	2.80	43.2	860	2821	4090	59400	68.00 mm
D073.4	2.75	42.4	815	2673	2.90	44.7	855	2804	4000	58100	
D073.5	2.75	42.4	810	2657	2.95	45.5	865	2837	4100	59500	
D073.6	2.85	44.0	820	2690	3.00	46.3	870	2854	4000	58100	
S062	2.80	43.2	810	2657	2.95	45.5	860	2821	3827	55500	
S065	2.90	44.7	760	2493	3.00	46.3	800	2624	3200	46400	
Bullet	Recommended Loads				Maximum Loads						Hornady
SST 10.70 g 165 grs	Powder Charge		Velocity V5		Powder Charge		Velocity V5		Pressure		No. 30452
	Grams	Grains	m/s	FPS	Grams	Grains	m/s	FPS	Bar	PSI	Cartridge Length
S060	2.40	37.0	740	2427	2.55	39.3	780	2558	4150	60200	71.00 mm
D073.4	2.50	38.6	750	2460	2.70	41.7	805	2640	4130	59900	
D073.5	2.50	38.6	750	2460	2.70	41.7	805	2640	4140	60100	
D073.6	2.80	43.2	780	2558	3.00	46.3	860	2821	4070	59100	
S062	2.75	42.4	760	2493	2.95	45.5	800	2624	3800	55200	
S065	2.80	43.2	750	2460	3.00	46.3	800	2624	3700	53700	
Bullet	Recommended Loads				Maximum Loads						Hornady
A-MAX 10.90 g 168 grs	Powder Charge		Velocity V5		Powder Charge		Velocity V5		Pressure		No. 30502
	Grams	Grains	m/s	FPS	Grams	Grains	m/s	FPS	Bar	PSI	Cartridge Length
S060	2.35	36.3	720	2362	2.55	39.3	780	2558	4120	59800	71.10 mm
D073.4	2.50	38.6	770	2526	2.70	41.7	825	2706	4100	59500	
D073.5	2.50	38.6	750	2460	2.65	40.9	810	2657	4140	60100	
D073.6	2.80	43.2	800	2624	3.00	46.3	860	2821	4140	60100	
S062	2.75	42.4	750	2460	2.95	45.5	805	2640	3780	54900	
S065	2.80	43.2	760	2493	3.00	46.3	810	2657	3950	57300	
Bullet	Recommended Loads				Maximum Loads						Sierra
HPBT 10.90 g 168 grs	Powder Charge		Velocity V5		Powder Charge		Velocity V5		Pressure		No. 2200
	Grams	Grains	m/s	FPS	Grams	Grains	m/s	FPS	Bar	PSI	Cartridge Length
S060	2.50	38.6	770	2526	2.62	40.4	810	2657	4120	59800	71.10 mm
D073.4	2.70	41.7	770	2526	2.85	44.0	815	2673	4130	59900	
D073.5	2.70	41.7	775	2542	2.85	44.0	810	2657	4140	60100	
D073.6	2.80	43.2	780	2558	2.95	45.5	825	2706	4080	59200	
S062	2.70	41.7	780	2558	2.80	43.2	810	2657	3890	56500	
S065	2.75	42.4	730	2394	2.80	43.2	750	2460	3100	45000	

RIFLE

.308 Winchester (continued)											
Bullet	Recommended Loads				Maximum Loads						Sellier & Bellot
SP 11.70 g 180 grs	Powder Charge		Velocity V5		Powder Charge		Velocity V5		Pressure		No. 2937
	Grams	Grains	m/s	FPS	Grams	Grains	m/s	FPS	Bar	PSI	Cartridge Length
S060	2.50	38.6	710	2329	2.60	40.1	750	2460	4020	58300	71.10 mm
D073.4	2.55	39.3	730	2394	2.70	41.7	780	2558	4030	58500	
D073.5	2.60	40.1	725	2378	2.75	42.4	780	2558	4000	58100	
D073.6	2.65	40.9	740	2427	2.85	44.0	790	2591	4080	59200	
S062	2.60	40.1	720	2362	2.75	42.4	760	2493	3950	57300	
S065	2.60	40.1	680	2230	2.75	42.4	700	2296	3080	44700	
Bullet	Recommended Loads				Maximum Loads						Sellier & Bellot
FMJ 11.70 g 180 grs	Powder Charge		Velocity V5		Powder Charge		Velocity V5		Pressure		No. 2957
	Grams	Grains	m/s	FPS	Grams	Grains	m/s	FPS	Bar	PSI	Cartridge Length
S060	2.40	37.0	710	2329	2.50	38.6	750	2460	4120	59800	70.50 mm
D073.4	2.50	38.6	730	2394	2.70	41.7	780	2558	4130	59900	
D073.5	2.50	38.6	725	2378	2.70	41.7	780	2558	4000	58100	
D073.6	2.60	40.1	740	2427	2.80	43.2	785	2575	4100	59500	
S062	2.60	40.1	720	2362	2.75	42.4	760	2493	3950	57300	
S065	2.60	40.1	680	2230	2.75	42.4	700	2296	3080	44700	
Bullet	Recommended Loads				Maximum Loads						Sellier & Bellot
HPC 11.70 g 180 grs	Powder Charge		Velocity V5		Powder Charge		Velocity V5		Pressure		No. 2983
	Grams	Grains	m/s	FPS	Grams	Grains	m/s	FPS	Bar	PSI	Cartridge Length
S060	2.40	37.0	750	2460	2.50	38.6	770	2526	4080	59200	71.10 mm
D073.4	2.50	38.6	735	2411	2.65	40.9	770	2526	4020	58300	
D073.5	2.50	38.6	730	2394	2.65	40.9	775	2542	4050	58800	
D073.6	2.60	40.1	745	2444	2.75	42.4	780	2558	4100	59500	
S062	2.60	40.1	760	2493	2.73	42.1	790	2591	4100	59500	
S065	2.65	40.9	720	2362	2.75	42.4	750	2460	3400	49400	
Bullet	Recommended Loads				Maximum Loads						Hornady
IT-BONT 11.70 g 180 grs	Powder Charge		Velocity V5		Powder Charge		Velocity V5		Pressure		No. 30709
	Grams	Grains	m/s	FPS	Grams	Grains	m/s	FPS	Bar	PSI	Cartridge Length
S060	2.30	35.5	700	2296	2.45	37.8	730	2394	4000	58100	71.00 mm
D073.4	2.30	35.5	720	2362	2.50	38.6	760	2493	4120	59800	
D073.5	2.40	37.0	710	2329	2.55	39.3	760	2493	4100	59500	
D073.6	2.60	40.1	730	2394	2.85	44.0	800	2624	4090	59400	
S062	2.60	40.1	710	2329	2.80	43.2	770	2526	3800	55200	
S065	2.65	40.9	700	2296	2.80	43.2	740	2427	3640	52800	

RIFLE DATA

.308 Winchester (continued)											
Bullet	Recommended Loads				Maximum Loads						Norma
VULKAN 11.70 g 180 grs	Powder Charge		Velocity V5		Powder Charge		Velocity V5		Pressure		No. 67653
	Grams	Grains	m/s	FPS	Grams	Grains	m/s	FPS	Bar	PSI	Cartridge Length
S060	2.35	36.3	710	2329	2.55	39.3	750	2460	4100	59500	68.70 mm
D073.4	2.40	37.0	720	2362	2.60	40.1	760	2493	4130	59900	
D073.5	2.45	37.8	720	2362	2.65	40.9	760	2493	4020	58300	
D073.6	2.65	40.9	740	2427	2.85	44.0	800	2624	4150	60200	
S062	2.65	40.9	700	2296	2.85	44.0	740	2427	3620	52500	
S065	2.65	40.9	700	2296	2.85	44.0	740	2427	3520	51100	
Bullet	Recommended Loads				Maximum Loads						Nosler
SPITZER 11.70 g 180 grs	Powder Charge		Velocity V5		Powder Charge		Velocity V5		Pressure		No. 30180
	Grams	Grains	m/s	FPS	Grams	Grains	m/s	FPS	Bar	PSI	Cartridge Length
S060	2.30	35.5	700	2296	2.50	38.6	740	2427	4140	60100	71.10 mm
D073.4	2.45	37.8	720	2362	2.60	40.1	770	2526	4090	59400	
D073.5	2.45	37.8	710	2329	2.60	40.1	760	2493	4140	60100	
D073.6	2.70	41.7	750	2460	2.85	44.0	810	2657	4120	59800	
S062	2.60	40.1	700	2296	2.75	42.4	750	2460	3650	53000	
S065	2.60	40.1	690	2263	2.80	43.2	740	2427	3650	53000	
Bullet	Recommended Loads				Maximum Loads						Nosler
ACCUBOND 11.70 g 180 grs	Powder Charge		Velocity V5		Powder Charge		Velocity V5		Pressure		No. 54825
	Grams	Grains	m/s	FPS	Grams	Grains	m/s	FPS	Bar	PSI	Cartridge Length
S060	2.30	35.5	700	2296	2.50	38.6	740	2427	4140	60100	71.10 mm
D073.4	2.45	37.8	720	2362	2.60	40.1	770	2526	4080	59200	
D073.5	2.45	37.8	710	2329	2.60	40.1	760	2493	4140	60100	
D073.6	2.65	40.9	750	2460	2.80	43.2	800	2624	4020	58300	
S062	2.60	40.1	700	2296	2.75	42.4	750	2460	3590	52100	
S065	2.60	40.1	690	2263	2.80	43.2	740	2427	3600	52300	
Bullet	Recommended Loads				Maximum Loads						Norma
ORYX 13.00 g 200 grs	Powder Charge		Velocity V5		Powder Charge		Velocity V5		Pressure		No. 67639
	Grams	Grains	m/s	FPS	Grams	Grains	m/s	FPS	Bar	PSI	Cartridge Length
S060	2.20	33.9	640	2099	2.40	37.0	690	2263	4120	59800	68.70 mm
D073.4	2.25	34.7	650	2132	2.45	37.8	710	2329	4080	59200	
D073.5	2.30	35.5	650	2132	2.50	38.6	700	2296	4020	58300	
D073.6	2.60	40.1	660	2165	2.70	41.7	720	2362	4100	59500	
S062	2.65	40.9	660	2165	2.85	44.0	720	2362	4080	59200	
S065	2.65	40.9	665	2181	2.85	44.0	725	2378	4010	58200	

RIFLE

.30-06 Springfield											
Barrel Length: 600 mm				Case: Sellier & Bellot				Max. Cartridge Length: 84.84 mm			
Twist: 10.00"				Primer: 5.3 LR Boxer S&B				Max. Pressure CIP: 4 050 Bar			
Bullet	Recommended Loads				Maximum Loads				Sellier & Bellot		
SPCE 9.70 g 150 grs	Powder Charge		Velocity V5		Powder Charge		Velocity V5		Pressure		No. 2936
	Grams	Grains	m/s	FPS	Grams	Grains	m/s	FPS	Bar	PSI	Cartridge Length
S060	3.00	46.3	830	2722	3.25	50.1	875	2870	4020	58300	80.00 mm
D073.4	3.15	48.6	835	2739	3.30	50.9	880	2886	3960	57500	
D073.5	3.15	48.6	830	2722	3.30	50.9	877	2877	3980	57800	
D073.6	3.25	50.1	835	2739	3.45	53.2	880	2886	3870	56200	
S062	3.20	49.4	827	2713	3.45	53.2	880	2886	3950	57300	
S065	3.45	53.2	824	2703	3.70	57.1	880	2886	3860	56000	
S070	3.50	54.0	835	2739	3.65	56.3	870	2854	3700	53700	
Bullet	Recommended Loads				Maximum Loads				Hornady		
SST 10.70 g 165 grs	Powder Charge		Velocity V5		Powder Charge		Velocity V5		Pressure		No. 30452
	Grams	Grains	m/s	FPS	Grams	Grains	m/s	FPS	Bar	PSI	Cartridge Length
S060	2.90	44.7	800	2624	3.10	47.8	840	2755	4150	60200	82.10 mm
D073.6	3.00	46.3	790	2591	3.25	50.1	850	2788	4070	59100	
S062	3.20	49.4	800	2624	3.50	54.0	870	2854	4020	58300	
S065	3.20	49.4	800	2624	3.50	54.0	860	2821	4010	58200	
S070	3.50	54.0	730	2394	3.80	58.6	800	2624	3700	53700	
Bullet	Recommended Loads				Maximum Loads				Hornady		
A-MAX 10.90 g 168 grs	Powder Charge		Velocity V5		Powder Charge		Velocity V5		Pressure		No. 30502
	Grams	Grains	m/s	FPS	Grams	Grains	m/s	FPS	Bar	PSI	Cartridge Length
S060	2.85	44.0	790	2591	3.05	47.1	830	2722	4120	59800	82.50 mm
D073.6	2.95	45.5	785	2575	3.20	49.4	840	2755	4140	60100	
S062	3.15	48.6	795	2608	3.45	53.2	860	2821	4100	59500	
S065	3.15	48.6	795	2608	3.45	53.2	850	2788	4050	58800	
S070	3.50	54.0	725	2378	3.75	57.9	800	2624	3800	55200	
Bullet	Recommended Loads				Maximum Loads				Sierra		
HPBT 10.90 g 168 grs	Powder Charge		Velocity V5		Powder Charge		Velocity V5		Pressure		No. 2200
	Grams	Grains	m/s	FPS	Grams	Grains	m/s	FPS	Bar	PSI	Cartridge Length
S060	2.80	43.2	760	2493	3.00	46.3	830	2722	4080	59200	82.50 mm
D073.6	2.90	44.7	790	2591	3.15	48.6	840	2755	4040	58600	
S062	3.20	49.4	800	2624	3.35	51.7	860	2821	4025	58400	
S065	3.30	50.9	803	2634	3.50	54.0	851	2791	4030	58500	
S070	3.45	53.2	730	2394	3.65	56.3	810	2657	3890	56500	

RIFLE

RIFLE DATA

.30-06 Springfield (continued)											
Bullet	Recommended Loads				Maximum Loads						Sellier & Bellot
	Powder Charge		Velocity V5		Powder Charge		Velocity V5		Pressure		No. 2937
SP 11.70 g 180 grs	Grams	Grains	m/s	FPS	Grams	Grains	m/s	FPS	Bar	PSI	Cartridge Length
S060	2.90	44.7	730	2394	3.10	47.8	805	2640	4120	59800	83.40 mm
D073.4	2.90	44.7	730	2394	3.15	48.6	800	2624	3950	57300	
D073.5	2.90	44.7	730	2394	3.15	48.6	795	2608	3890	56500	
D073.6	3.15	48.6	735	2411	3.30	50.9	800	2624	3990	57900	
S062	3.10	47.8	745	2444	3.50	54.0	820	2690	3980	57800	
S065	3.35	51.7	745	2444	3.60	55.5	820	2690	3985	57800	
S070	3.50	54.0	730	2394	3.90	60.2	790	2591	3600	52300	
Bullet	Recommended Loads				Maximum Loads						Sellier & Bellot
FMJ 11.70 g 180 grs	Powder Charge		Velocity V5		Powder Charge		Velocity V5		Pressure		No. 2957
	Grams	Grains	m/s	FPS	Grams	Grains	m/s	FPS	Bar	PSI	Cartridge Length
S060	2.80	43.2	770	2526	3.00	46.3	815	2673	4010	58200	82.50 mm
D073.4	2.95	45.5	775	2542	3.10	47.8	830	2722	3980	57800	
D073.5	2.95	45.5	760	2493	3.10	47.8	825	2706	4040	58600	
D073.6	3.00	46.3	770	2526	3.20	49.4	840	2755	4050	58800	
S062	3.00	46.3	760	2493	3.35	51.7	815	2673	3960	57500	
S065	3.30	50.9	765	2509	3.50	54.0	845	2772	4120	59800	
S070	3.40	52.5	735	2411	3.80	58.6	795	2608	3460	50200	
Bullet	Recommended Loads				Maximum Loads						Sellier & Bellot
HPC 11.70 g 180 grs	Powder Charge		Velocity V5		Powder Charge		Velocity V5		Pressure		No. 2983
	Grams	Grains	m/s	FPS	Grams	Grains	m/s	FPS	Bar	PSI	Cartridge Length
S060	2.90	44.7	775	2542	3.05	47.1	810	2657	4045	58700	83.40 mm
D073.4	2.95	45.5	765	2509	3.10	47.8	800	2624	4040	58600	
D073.5	2.95	45.5	760	2493	3.10	47.8	800	2624	4050	58800	
D073.6	3.10	47.8	785	2575	3.20	49.4	805	2640	4050	58800	
S062	3.10	47.8	775	2542	3.25	50.1	817	2680	4040	58600	
S065	3.30	50.9	765	2509	3.55	54.8	825	2706	4035	58600	
S070	3.45	53.2	720	2362	3.65	56.3	770	2526	3980	57800	
Bullet	Recommended Loads				Maximum Loads						Hornady
IT-BONT 11.70 g 180 grs	Powder Charge		Velocity V5		Powder Charge		Velocity V5		Pressure		No. 30709
	Grams	Grains	m/s	FPS	Grams	Grains	m/s	FPS	Bar	PSI	Cartridge Length
S060	2.80	43.2	735	2411	3.00	46.3	785	2575	4040	58600	82.40 mm
D073.6	3.00	46.3	750	2460	3.20	49.4	810	2657	4120	59800	
S062	3.20	49.4	755	2476	3.40	52.5	810	2657	3980	57800	
S065	3.20	49.4	750	2460	3.40	52.5	805	2640	4020	58300	
S070	3.40	52.5	700	2296	3.70	57.1	760	2493	3640	52800	

.30-06 Springfield (continued)											
Bullet	Recommended Loads				Maximum Loads						Norma
VULKAN 11.70 g 180 grs	Powder Charge		Velocity V5		Powder Charge		Velocity V5		Pressure		No. 67653
	Grams	Grains	m/s	FPS	Grams	Grains	m/s	FPS	Bar	PSI	Cartridge Length
S060	2.90	44.7	750	2460	3.10	47.8	790	2591	4040	58600	81.00 mm
D073.6	3.00	46.3	760	2493	3.30	50.9	800	2624	4020	58300	
S062	3.30	50.9	765	2509	3.50	54.0	815	2673	4080	59200	
S065	3.35	51.7	770	2526	3.55	54.8	820	2690	4090	59400	
S070	3.50	54.0	700	2296	3.80	58.6	760	2493	3520	51100	
Bullet	Recommended Loads				Maximum Loads						Nosler
SPITZER 11.70 g 180 grs	Powder Charge		Velocity V5		Powder Charge		Velocity V5		Pressure		No. 30180
	Grams	Grains	m/s	FPS	Grams	Grains	m/s	FPS	Bar	PSI	Cartridge Length
S060	2.80	43.2	710	2329	3.00	46.3	770	2526	4140	60100	82.50 mm
D073.6	3.00	46.3	750	2460	3.25	50.1	800	2624	4060	58900	
S062	3.20	49.4	750	2460	3.40	52.5	805	2640	4120	59800	
S065	3.25	50.1	750	2460	3.45	53.2	805	2640	3980	57800	
S070	3.45	53.2	690	2263	3.75	57.9	760	2493	3650	53000	
Bullet	Recommended Loads				Maximum Loads						Nosler
ACCUBOND 11.70 g 180 grs	Powder Charge		Velocity V5		Powder Charge		Velocity V5		Pressure		No. 54825
	Grams	Grains	m/s	FPS	Grams	Grains	m/s	FPS	Bar	PSI	Cartridge Length
S060	2.80	43.2	705	2312	3.00	46.3	775	2542	4080	59200	82.50 mm
D073.6	2.95	45.5	740	2427	3.15	48.6	790	2591	4140	60100	
S062	3.20	49.4	750	2460	3.40	52.5	810	2657	4100	59500	
S065	3.25	50.1	750	2460	3.45	53.2	805	2640	4020	58300	
S070	3.45	53.2	700	2296	3.70	57.1	770	2526	3600	52300	
Bullet	Recommended Loads				Maximum Loads						Norma
ORYX 13.00 g 200 grs	Powder Charge		Velocity V5		Powder Charge		Velocity V5		Pressure		No. 67639
	Grams	Grains	m/s	FPS	Grams	Grains	m/s	FPS	Bar	PSI	Cartridge Length
S060	2.75	42.4	680	2230	2.95	45.5	730	2394	4000	58100	81.00 mm
D073.6	2.90	44.7	685	2247	3.10	47.8	740	2427	4120	59800	
S062	3.10	47.8	700	2296	3.35	51.7	760	2493	4050	58800	
S065	3.15	48.6	700	2296	3.40	52.5	765	2509	4080	59200	
S070	3.50	54.0	680	2230	3.70	57.1	725	2378	3500	50800	

RIFLE DATA

.30-06 Springfield (continued)											
Bullet	Recommended Loads				Maximum Loads						Sierra
GR RN 14.30 g 220 grs	Powder Charge		Velocity V5		Powder Charge		Velocity V5		Pressure		No. 2180
	Grams	Grains	m/s	FPS	Grams	Grains	m/s	FPS	Bar	PSI	Cartridge Length
S060	2.65	40.9	630	2066	2.85	44.0	680	2230	4070	59100	81.00 mm
D073.6	2.85	44.0	660	2165	3.05	47.1	710	2329	4140	60100	
S062	3.00	46.3	670	2198	3.20	49.4	715	2345	4080	59200	
S065	3.05	47.1	670	2198	3.25	50.1	715	2345	4040	58600	
S070	3.50	54.0	640	2099	3.65	56.3	710	2329	3560	51700	
Bullet	Recommended Loads				Maximum Loads						Hornady
GR RN 14.30 g 220 grs	Powder Charge		Velocity V5		Powder Charge		Velocity V5		Pressure		No. 3090
	Grams	Grains	m/s	FPS	Grams	Grains	m/s	FPS	Bar	PSI	Cartridge Length
S060	2.65	40.9	690	2263	2.85	44.0	670	2198	3950	57300	81.00 mm
D073.6	2.85	44.0	660	2165	3.05	47.1	700	2296	4050	58800	
S062	3.00	46.3	670	2198	3.25	50.1	715	2345	4120	59800	
S065	3.10	47.8	670	2198	3.30	50.9	715	2345	4100	59500	
S070	3.55	54.8	640	2099	3.70	57.1	700	2296	3720	54000	

.300 Winchester Mag.											
Barrel Length: 650 mm				Case: Sellier & Bellot				Max. Cartridge Length: 84.84 mm			
Twist: 10.00"				Primer: 5.3 LR Boxer S&B				Max. Pressure CIP: 4 300 Bar			
Bullet	Recommended Loads				Maximum Loads						Sierra
HPBT 10.90 g 168 grs	Powder Charge		Velocity V5		Powder Charge		Velocity V5		Pressure		No. 2200
	Grams	Grains	m/s	FPS	Grams	Grains	m/s	FPS	Bar	PSI	Cartridge Length
S062	3.80	58.6	866	2840	4.05	62.5	910	2985	4260	61800	84.80 mm
S065	4.05	62.5	878	2880	4.25	65.6	913	2995	4190	60800	
S070	4.30	66.3	870	2854	4.55	70.2	920	3018	4190	60800	
Bullet	Recommended Loads				Maximum Loads						Sellier & Bellot
SPCE 11.70 g 180 grs	Powder Charge		Velocity V5		Powder Charge		Velocity V5		Pressure		No. 2935
	Grams	Grains	m/s	FPS	Grams	Grains	m/s	FPS	Bar	PSI	Cartridge Length
S062	3.80	58.6	845	2772	4.00	61.7	880	2886	4290	62300	84.80 mm
S065	4.00	61.7	853	2798	4.20	64.8	887	2909	4230	61400	
S070	4.30	66.3	860	2821	4.50	69.4	900	2952	4230	61400	

7.62 x 39											
Barrel Length: 600 mm					Case: Sellier & Bellot					Max. Cartridge Length: 56.00 mm	
Twist: 9.46"					Primer: 5.3 LR Boxer S&B					Max. Pressure CIP: 3 550 Bar	
Bullet	Recommended Loads				Maximum Loads						Sellier & Bellot
FMJ 8.00 g 123 grs	Powder Charge		Velocity V5		Powder Charge		Velocity V5		Pressure		No. 2907
	Grams	Grains	m/s	FPS	Grams	Grains	m/s	FPS	Bar	PSI	Cartridge Length
	S053	1.50	23.1	715	2345	1.62	25.0	765	2509	3490	50700
D063	1.50	23.1	730	2394	1.65	25.5	770	2526	3520	51100	
Bullet	Recommended Loads				Maximum Loads						Sellier & Bellot
SP 8.00 g 123 grs	Powder Charge		Velocity V5		Powder Charge		Velocity V5		Pressure		No. 2943
	Grams	Grains	m/s	FPS	Grams	Grains	m/s	FPS	Bar	PSI	Cartridge Length
	S053	1.50	23.1	720	2362	1.62	25.0	760	2493	3520	51100
D063	1.50	23.1	725	2378	1.65	25.5	765	2509	3540	51400	

7.62 x 54 R											
Barrel Length: 730 mm					Case: Sellier & Bellot					Max. Cartridge Length: 77.20 mm	
Twist: 9.46"					Primer: 5.3 LR Boxer S&B					Max. Pressure CIP: 3 900 Bar	
Bullet	Recommended Loads				Maximum Loads						Sierra
HPBT 11.30 g 174 grs	Powder Charge		Velocity V5		Powder Charge		Velocity V5		Pressure		No. 2315
	Grams	Grains	m/s	FPS	Grams	Grains	m/s	FPS	Bar	PSI	Cartridge Length
	S060	2.70	41.7	790	2591	2.85	44.0	825	2706	3860	56000
D073.4	2.95	45.5	780	2558	3.10	47.8	810	2657	3870	56200	
D073.5	2.95	45.5	775	2542	3.10	47.8	805	2640	3860	56000	
D073.6	3.10	47.8	790	2591	3.25	50.1	825	2706	3820	55400	
S062	3.10	47.8	810	2657	3.25	50.1	840	2755	3800	55200	
S065	3.15	48.6	800	2624	3.25	50.1	830	2722	3520	51100	
Bullet	Recommended Loads				Maximum Loads						Sellier & Bellot
FMJ 11.70 g 180 grs	Powder Charge		Velocity V5		Powder Charge		Velocity V5		Pressure		No. 2909
	Grams	Grains	m/s	FPS	Grams	Grains	m/s	FPS	Bar	PSI	Cartridge Length
	S060	2.65	40.9	760	2493	2.90	44.7	830	2722	3900	56600
D073.4	2.90	44.7	765	2509	3.05	47.1	805	2640	3890	56500	
D073.5	2.90	44.7	760	2493	3.05	47.1	800	2624	3860	56000	
D073.6	3.00	46.3	770	2526	3.15	48.6	800	2624	3900	56600	
S062	3.00	46.3	792	2598	3.15	48.6	835	2739	3860	56000	
S065	3.10	47.8	782	2565	3.30	50.9	831	2726	3700	53700	

RIFLE

RIFLE DATA

7.62 x 54 R (continued)											
Bullet	Recommended Loads				Maximum Loads						Sellier & Bellot
	Powder Charge		Velocity V5		Powder Charge		Velocity V5		Pressure		No. 2940
SP 11.70 g 180 grs	Grams	Grains	m/s	FPS	Grams	Grains	m/s	FPS	Bar	PSI	Cartridge Length
S060	2.70	41.7	775	2542	2.95	45.5	830	2722	3870	56200	73.00 mm
D073.4	2.90	44.7	780	2558	3.05	47.1	800	2624	3840	55700	
D073.5	2.90	44.7	775	2542	3.05	47.1	800	2624	3875	56200	
D073.6	3.00	46.3	770	2526	3.15	48.6	800	2624	3880	56300	
S062	3.00	46.3	790	2591	3.20	49.4	838	2749	3790	55000	
S065	3.15	48.6	785	2575	3.38	52.2	840	2755	3740	54300	

8 x 57 IR											
Barrel Length: 600 mm					Case: Sellier & Bellot					Max. Cartridge Length: 82.00 mm	
Twist: 9.46"					Primer: 5.3 LR Boxer S&B					Max. Pressure CIP: 3 200 Bar	
Bullet	Recommended Loads				Maximum Loads						Sellier & Bellot
	Powder Charge		Velocity V5		Powder Charge		Velocity V5		Pressure		No. 2941
SP 12.70 g 196 grs	Grams	Grains	m/s	FPS	Grams	Grains	m/s	FPS	Bar	PSI	Cartridge Length
S060	2.40	37.0	640	2099	2.60	40.1	710	2329	2890	41900	78.00 mm
S062	2.55	39.3	650	2132	2.80	43.2	736	2414	2850	41400	
S065	2.80	43.2	670	2198	3.10	47.8	742	2434	2970	43100	
S070	3.00	46.3	690	2263	3.20	49.4	746	2447	2980	43300	

8 x 57 IS											
Barrel Length: 600 mm					Case: Sellier & Bellot					Max. Cartridge Length: 82.00 mm	
Twist: 9.46"					Primer: 5.3 LR Boxer S&B					Max. Pressure CIP: 3 900 Bar	
Bullet	Recommended Loads				Maximum Loads						Sellier & Bellot
	Powder Charge		Velocity V5		Powder Charge		Velocity V5		Pressure		No. 2910
FMJ 12.70 g 196 grs	Grams	Grains	m/s	FPS	Grams	Grains	m/s	FPS	Bar	PSI	Cartridge Length
S062	2.80	43.2	720	2362	3.10	47.8	764	2506	3710	53900	79.00 mm
S065	3.10	47.8	700	2296	3.20	49.4	762	2499	3620	52500	
S070	3.25	50.1	695	2280	3.40	52.5	745	2444	3420	49600	
SPCE 12.70 g 196 grs	3.00	46.3	740	2427	3.20	49.4	780	2558	3860	56000	
S065	3.10	47.8	700	2296	3.35	51.7	760	2493	3720	54000	76.60 mm
S070	3.20	49.4	695	2280	3.35	51.7	740	2427	3452	50100	

8 x 57 IS (continued)											
Bullet	Recommended Loads				Maximum Loads						Sellier & Bellot
	Powder Charge		Velocity V5		Powder Charge		Velocity V5		Pressure		No. 2986
HPC 12.70 g 196 grs	Grams	Grains	m/s	FPS	Grams	Grains	m/s	FPS	Bar	PSI	Cartridge Length
S062	2.85	44.0	710	2329	3.15	48.6	770	2526	3790	55000	80.00 mm
S065	3.15	48.6	700	2296	3.30	50.9	755	2476	3680	53400	
S070	3.25	50.1	700	2296	3.35	51.7	745	2444	3350	48600	
Bullet	Recommended Loads				Maximum Loads						Sierra
SBT 14.26 g 220 grs	Powder Charge		Velocity V5		Powder Charge		Velocity V5		Pressure		No. 2420
	Grams	Grains	m/s	FPS	Grams	Grains	m/s	FPS	Bar	PSI	Cartridge Length
S062	3.05	47.1	715	2345	3.20	49.4	740	2427	3790	55000	79.00 mm
S065	3.10	47.8	710	2329	3.30	50.9	740	2427	3860	56000	
S070	3.10	47.8	640	2099	3.30	50.9	670	2198	3480	50500	

8 x 57 IRS											
Barrel Length: 600 mm				Case: Sellier & Bellot				Max. Cartridge Length: 82.00 mm			
Twist: 9.46"				Primer: 5.3 LR Boxer S&B				Max. Pressure CIP: 3 300 Bar			
Bullet	Recommended Loads				Maximum Loads						Sellier & Bellot
	Powder Charge		Velocity V5		Powder Charge		Velocity V5		Pressure		No. 2945
SPCE 12.70 g 196 grs	Grams	Grains	m/s	FPS	Grams	Grains	m/s	FPS	Bar	PSI	Cartridge Length
S062	2.90	44.7	700	2296	3.05	47.1	740	2427	3160	45900	79.00 mm
S065	3.10	47.8	700	2296	3.30	50.9	741	2430	3240	47000	
S070	3.20	49.4	705	2312	3.40	52.5	748	2453	3250	47200	
Bullet	Recommended Loads				Maximum Loads						Sellier & Bellot
HPC 12.70 g 196 grs	Powder Charge		Velocity V5		Powder Charge		Velocity V5		Pressure		No. 2986
	Grams	Grains	m/s	FPS	Grams	Grains	m/s	FPS	Bar	PSI	Cartridge Length
S062	2.85	44.0	710	2329	3.00	46.3	751	2463	3280	47600	79.60 mm
S065	3.05	47.1	700	2296	3.20	49.4	745	2444	3190	46300	
S070	3.20	49.4	720	2362	3.30	50.9	742	2434	3250	47200	
Bullet	Recommended Loads				Maximum Loads						Sierra
SBT 14.26 g 220 grs	Powder Charge		Velocity V5		Powder Charge		Velocity V5		Pressure		No. 2420
	Grams	Grains	m/s	FPS	Grams	Grains	m/s	FPS	Bar	PSI	Cartridge Length
S062	2.85	44.0	680	2230	2.95	45.5	710	2329	3250	47200	79.00 mm
S065	2.90	44.7	660	2165	3.10	47.8	695	2280	3080	44700	
S070	3.10	47.8	680	2230	3.25	50.1	710	2329	3180	46200	

RIFLE

RIFLE DATA

8 x 64 S											
Barrel Length: 600 mm					Case: Sellier & Bellot				Max. Cartridge Length: 87.50 mm		
Twist: 9.46"					Primer: 5.3 LR Boxer S&B				Max. Pressure CIP: 4 050 Bar		
Bullet	Recommended Loads				Maximum Loads					Sellier & Bellot	
SPCE 12.70 g 196 grs	Powder Charge		Velocity V5		Powder Charge		Velocity V5		Pressure		No. 2945
	Grams	Grains	m/s	FPS	Grams	Grains	m/s	FPS	Bar	PSI	Cartridge Length
S062	3.10	47.8	740	2427	3.35	51.7	805	2640	3890	56500	83.00 mm
S065	3.40	52.5	750	2460	3.55	54.8	790	2591	3720	54000	
S070	3.45	53.2	740	2427	3.60	55.5	780	2558	3620	52500	
Bullet	Recommended Loads				Maximum Loads					Sellier & Bellot	
HPC 12.70 g 196 grs	Powder Charge		Velocity V5		Powder Charge		Velocity V5		Pressure		No. 2986
	Grams	Grains	m/s	FPS	Grams	Grains	m/s	FPS	Bar	PSI	Cartridge Length
S062	3.00	46.3	740	2427	3.35	51.7	800	2624	3860	56000	86.70 mm
S065	3.30	50.9	745	2444	3.55	54.8	790	2591	3720	54000	
S070	3.45	53.2	746	2447	3.60	55.5	780	2558	3580	52000	

.338 Lapua Mag.											
Barrel Length: 600 mm					Case: Lapua				Max. Cartridge Length: 93.50 mm		
Twist: 10.00"					Primer: CCI 250 LR Magnum				Max. Pressure CIP: 4 700 Bar		
Bullet	Recommended Loads				Maximum Loads					Lapua	
HPBT 16.20 g 250 grs	Powder Charge		Velocity V5		Powder Charge		Velocity V5		Pressure		No. GB 488
	Grams	Grains	m/s	FPS	Grams	Grains	m/s	FPS	Bar	PSI	Cartridge Length
S065	4.50	69.4	750	2460	5.00	77.2	840	2755	4180	60700	93.50
S070	5.00	77.2	750	2460	5.90	91.0	900	2952	4680	67900	
Bullet	Recommended Loads				Maximum Loads					Sierra	
HPBT 16.20 g 250 grs	Powder Charge		Velocity V5		Powder Charge		Velocity V5		Pressure		No. 2650
	Grams	Grains	m/s	FPS	Grams	Grains	m/s	FPS	Bar	PSI	Cartridge Length
S065	4.50	69.4	750	2460	5.00	77.2	840	2755	4180	60700	93.50
S070	5.00	77.2	750	2460	5.90	91.0	900	2952	4680	67900	
Bullet	Recommended Loads				Maximum Loads					Nosler	
ACCUBOND 16.20 g 250 grs	Powder Charge		Velocity V5		Powder Charge		Velocity V5		Pressure		No. 57287
	Grams	Grains	m/s	FPS	Grams	Grains	m/s	FPS	Bar	PSI	Cartridge Length
S065	4.50	69.4	750	2460	5.00	77.2	840	2755	4620	67000	93.50
S070	5.00	77.2	750	2460	5.75	88.7	780	2558	4720	68500	

9.3 x 62											
Barrel Length: 600 mm					Case: Sellier & Bellot					Max. Cartridge Length: 83.60 mm	
Twist: 14.18"					Primer: 5.3 LR Boxer S&B					Max. Pressure CIP: 3 900 Bar	
Bullet	Recommended Loads				Maximum Loads						Norma
VULKAN 15.00 g 232 grs	Powder Charge		Velocity V5		Powder Charge		Velocity V5		Pressure		No. 69305
	Grams	Grains	m/s	FPS	Grams	Grains	m/s	FPS	Bar	PSI	Cartridge Length
S060	3.50	54.0	720	2362	3.70	57.1	780	2558	3720	54000	80.00 mm
D073.4	3.65	56.3	750	2460	3.85	59.4	820	2690	3650	53000	
D073.5	3.70	57.1	725	2378	3.90	60.2	775	2542	3680	53400	
D073.6	3.80	58.6	730	2394	4.00	61.7	800	2624	3620	52500	
S062	3.90	60.2	700	2296	4.10	63.3	770	2526	3180	46200	
S065	3.90	60.2	700	2296	4.10	63.3	770	2526	3080	44700	
Bullet	Recommended Loads				Maximum Loads						Sellier & Bellot
SP 18.50 g 285 grs	Powder Charge		Velocity V5		Powder Charge		Velocity V5		Pressure		No. 2952
	Grams	Grains	m/s	FPS	Grams	Grains	m/s	FPS	Bar	PSI	Cartridge Length
S060	3.35	51.7	670	2198	3.50	54.0	705	2312	3890	56500	83.00 mm
D073.4	3.45	53.2	678	2224	3.65	56.3	720	2362	3890	56500	
D073.5	3.45	53.2	680	2230	3.65	56.3	716	2348	3900	56600	
D073.6	3.50	54.0	685	2247	3.75	57.9	710	2329	3870	56200	
S062	3.60	55.5	680	2230	3.90	60.2	710	2329	3790	55000	
S065	3.80	58.6	670	2198	4.00	61.7	718	2355	3620	52500	
Bullet	Recommended Loads				Maximum Loads						Hornady
SP/RP 18.55 g 286 grs	Powder Charge		Velocity V5		Powder Charge		Velocity V5		Pressure		No. 3560
	Grams	Grains	m/s	FPS	Grams	Grains	m/s	FPS	Bar	PSI	Cartridge Length
S060	3.20	49.4	670	2198	3.40	52.5	705	2312	3890	56500	79.50 mm
D073.4	3.30	50.9	680	2230	3.55	54.8	730	2394	3850	55900	
D073.5	3.35	51.7	680	2230	3.55	54.8	725	2378	3870	56200	
D073.6	3.60	55.5	670	2198	3.80	58.6	730	2394	3680	53400	
S062	3.70	57.1	675	2214	3.90	60.2	720	2362	3480	50500	
S065	3.75	57.9	670	2198	3.95	60.9	705	2312	3560	51700	

9.3 x 72 R											
Barrel Length: 600 mm					Case: Sellier & Bellot					Max. Cartridge Length: 86.00 mm	
Twist: 15.54"					Primer: 5.3 LR Boxer S&B					Max. Pressure CIP: 2 000 Bar	
Bullet	Recommended Loads				Maximum Loads						Sellier & Bellot
SP 12.50 g 193 grs	Powder Charge		Velocity V5		Powder Charge		Velocity V5		Pressure		No. 2951
	Grams	Grains	m/s	FPS	Grams	Grains	m/s	FPS	Bar	PSI	Cartridge Length
S060	2.85	44.0	613	2011	3.10	47.8	670	2198	1960	28500	86.00 mm
S062	3.10	47.8	610	2001	3.35	51.7	668	2191	1970	28600	
S065	3.35	51.7	635	2083	3.45	53.2	672	2204	1980	28700	

RIFLE DATA

9.3 x 74 R											
Barrel Length: 600 mm				Case: Sellier & Bellot				Max. Cartridge Length: 94.50 mm			
Twist: 14.17"				Primer: 5.3 LR Boxer S&B				Max. Pressure CIP: 3 400 Bar			
Bullet	Recommended Loads				Maximum Loads				Sellier & Bellot		
	Powder Charge		Velocity V5		Powder Charge		Velocity V5		Pressure		No. 2952
SP 18.50 g 285 grs	Grams	Grains	m/s	FPS	Grams	Grains	m/s	FPS	Bar	PSI	Cartridge Length
	S060	3.40	52.5	650	2132	3.55	54.8	675	2214	3280	
S062	3.50	54.0	650	2132	3.70	57.1	700	2296	3340	48500	
S065	3.70	57.1	640	2099	4.00	61.7	695	2280	3320	48200	
S070	3.90	60.2	650	2132	4.10	63.3	702	2303	3310	48000	

.45-70 Government (Trapdoor Springfield)											
Barrel Length: 600 mm				Case: Winchester				Max. Cartridge Length: 64.77 mm			
Twist: 20.00"				Primer: CCI 200				Max. Pressure CIP: 2 200 Bar			
(L) 24.50 g 378 grs	Recommended Loads				Maximum Loads				Pressure		Cartridge Length
	Powder Charge		Velocity V5		Powder Charge		Velocity V5		Bar	PSI	
	Grams	Grains	m/s	FPS	Grams	Grains	m/s	FPS	Bar	PSI	62.00 mm
D060	1.65	25.5	380	1246	1.80	27.8	420	1378	2000	29000	
S070	3.00	46.3	370	1214	3.35	51.7	430	1410	2100	30500	
(L) 32.40 g 500 grs	Recommended Loads				Maximum Loads				Pressure		Cartridge Length
	Powder Charge		Velocity V5		Powder Charge		Velocity V5		Bar	PSI	
	Grams	Grains	m/s	FPS	Grams	Grains	m/s	FPS	Bar	PSI	65.00 mm
D060	1.50	23.1	360	1181	1.60	24.7	380	1246	2100	30500	
S070	2.40	37.0	350	1148	2.60	40.1	370	1214	2050	29800	

.50 Browning											
Barrel Length: 1 143 mm				Case: PMC				Max. Cartridge Length: 138.40 mm			
Twist: 15.00"				Primer: CCI No. 35				Max. Pressure CIP: 3 700 Bar			
Bullet	Recommended Loads				Maximum Loads				Pressure		Hornady
	Powder Charge		Velocity V5		Powder Charge		Velocity V5		Pressure		No. 5165
A-MAX 48.60 g 750 grs	Grams	Grains	m/s	FPS	Grams	Grains	m/s	FPS	Bar	PSI	Cartridge Length
	D100	13.20	203.7	820	2690	15.50	239.2	870	2854	3580	

LOVEY	Accurate	Alliant	Hodgdon	IMR	Norma	PB	Ramshot	RWS	Vectan	Vihtavuori	Winchester
			Titewad			PCL 514					
	Nitro 100				R1						WST
S011			HP38					P805	Ba10	N310	
	Solo 1000	Bullseye	Titegroup Clays	Trail Boss				P801			231
						Competition					452
D032	No. 2	Red Dot		Hi-Skor 700X		PCL506				N320	WSL
S020	Solo 1250	American Select	Clays Int'l	PB					AS		473
		Promo		SR7625			Zip			N32C	
		Green Dot						P804	A1		
D036	No. 5	Unique	Clays Universal					P803			WSF
		Power Pistol	HS-6			PCL501			Ba9	N330	540
		Herc0	Longshot	SR4756		PCL504	Silhouette		SP8	N340	WAP
									A0	3N37	
				Hi-Skor 800X			True Blue			N350	
		Blue Dot							SP2 Pract.	3N38	571
D037.1	No. 7	Steel	HS-7							N105	
		2400					Enforcer				
D037.2	No. 9				R-123				SP3		
	4100		H110	SR4759				P806			
S040			H4198	IMR4227		PCL512		R910		N110	296
			Li'l Gun						Ba6		680
D060	5744	410	H4227		200			R901			
S053											
D063	1680	Reloder 7		IMR4198					Tubal 2000	N120	
S060	2015					PCL508					
		Reloder 11	Benchmark	IMR3031				R902			
D073.4	2230		H322			PCL507					
D073.5	2460	Reloder 10X	BL(C)-2		201				SP10	N130	748
			H335		202		X-Terminator		Tubal 3000	N133	
	2495							R903			
D073.6	2520			IMR4064					SP9		
S062	4064	Reloder 12	H4895	IMR4895			TAC			N530	
										N135	
S065			Varget	IMR4320					SP7		
	2700	Reloder 15	H380		203B	PCL511	Big Game	R907		N140	
			H414							N540	760
S070	4350		H4350		URP			R904	Tubal 5000	N150	
		Reloder 19		IMR4350						N550	
			H450		204		Hunter		SP11		WMR
			H4831SC	IMR4831					Tubal 7000	N160	785
	3100		H4831		MRP			R905		N560	
	MagPro	Reloder 22		IMR7828SSC	MRP(2)				Tubal 8000	N165	WXR
	H1000	Reloder 25		IMR7828			Magnum				
	8700		Retumbo							N170	
			H870			PCL520			SP13	N570	
			50BAMG							24N41	
D100			H5010							20N29	

Fast Burning

Slow Burning



Explosia Company

Semtín 107, 530 50 Pardubice, Czech Republic

phone: +420 466 825 500

fax: +420 466 822 966

e-mail: explosia@explosia.cz

Propellants Division Sales Department

phone: +420 466 825 287

+420 466 825 288

fax: +420 466 822 943

e-mail: propellants@explosia.cz



www.explosia.cz

© Explosia Company

Version 2011-02-17. All rights reserved. Specifications in this Propellants Catalog are subject to change without notice.